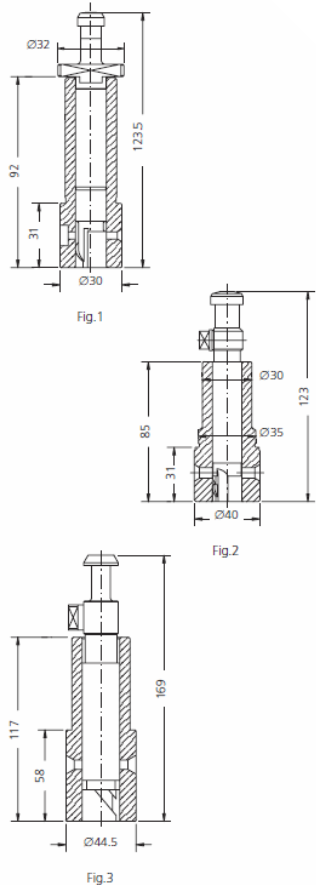




ALLEN A.P.E.



PUMP ELEMENTS SUITABLE TO:

ALLEN A.P.E.

DRW.	ENGINE TYPE	SDS TYPE	SDS No.	ORIGINAL REFERENCE	TECHNICAL DATA		NOTES
					Ø	HELIX DIRECT.	
1	S12	CRB-P 005	1 12 02 0025	3/412 D	14	LH	BELOW 500 rpm AND 501 TO 650 rpm
1	BS12 VBS12	CRB-P 005	1 12 02 0025	3/412 D	14	LH	600 TO 699 rpm AND 700 TO 750 rpm
1	BCS12	CRB-P 005	1 12 02 0025	3/412 D	14	LH	
1	BS12C VBS12C	CRB-P 005	1 12 02 0025	3/412 D	14	LH	
1	S30C	CRB-P 005	1 12 02 0025	3/412 D	14	LH	
2	BCS12D VBCS12D	CBR-P 100	1 14 03 0005	6/110 C	18	LH	SPECIAL RATING
2	VBCS12E VBCS12F	CBR-P 102	1 14 03 0010	6/110 E	20	LH	SHEATHED H.P. PIPE UPRATE
3	BCS37E VBCS37F	CBR-P 130	1 16 03 0005	21/19 C	18	LH	BELOW 549 rpm
3	BCS37E VBCS37F	CBR-P 131	1 16 03 0010	21/19 D	20	LH	550 rpm AND ABOVE
3	BCS37E VBCS37F	CBR-P 131	1 16 03 0010	21/19 D	20	LH	SHEATHED PIPE
3	BCS37E VBCS37F	CBR-P 131	1 16 03 0010	21/19 D	20	LH	HEAVY FUEL
3	BCS37E VBCS37F	CBR-P 131	1 16 03 0010	21/19 D	20	LH	HEAVY FUEL SHEATHED PIPE

Scandic Diesel Services Inc.
 6360 Notre Dame East
 Montreal, Quebec
 H1N 2E1, Canada

Phone +1 514 228 1299
 Telefax +1 514 256 8237
 24 hours +1 514 566 1553
 Email sales@scandiserv.com

www.scandiserv.com

Scandic Diesel Services © 2009 - 2011
 All rights reserved



ALLEN A.P.E.

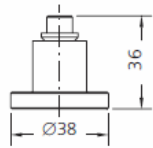


Fig.1

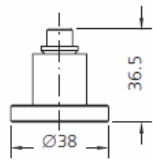


Fig.2

DELIVERY VALVES SUITABLE TO:					ALLEN A.P.E.	
DRW.	ENGINE TYPE	SDS TYPE	SDS No.	ORIGINAL REFERENCE	TECHNICAL DATA	NOTES
					\emptyset	
1	BCS12D VBCS12E	CBR-V 072	2 26 03 0010	21/125 D	12	SPECIAL RATING
2	BCS12F VBCS12F	CBR-V 100	2 13 03 0100	21/262	12	SHEATHED H.P. PIPE UPRATE
1	BCS37F VBCS37F	CBR-V 074	2 26 03 0012	21/125 F	12	BELOW 549 rpm
1	BCS37F VBCS37F	CBR-V 074	2 26 03 0012	21/125 F	12	550 rpm AND ABOVE
1	BCS37F VBCS37F	CBR-V 074	2 26 03 0012	21/125 F	12	SHEATHED PIPE
1	BCS37F VBCS37F	CBR-V 074	2 26 03 0012	21/125 F	12	HEAVY FUEL
1	BCS37F VBCS37F	CBR-V 074	2 26 03 0012	21/125 F	12	HEAVY FUEL SHEATHED PIPE



ALLEN A.P.E.

NOZZLE ELEMENTS SUITABLE TO: ALLEN A.P.E.

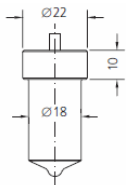


Fig. 1

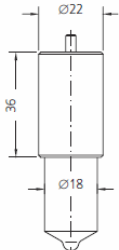


Fig. 2

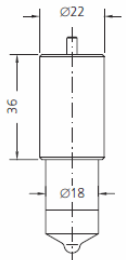


Fig. 3

* = RAFFREDDATO - COOLED
 C = CROMATO - CHROMATED

DRW.	ENGINE TYPE	SDS TYPE	SDS No.	ORIGINAL REFERENCE	SPRAY DATA	PRESS. STAGE	NOTES
1	S12	L 120 T 30 FP 3	3 04 03 0264	H 120 T 30 FP 3	6x0.30x120°	6x3.5	BELOW 500 rpm
1	S12	L 120 T 30 GP 3	3 04 03 0265	H 120 T 30 GP 3	7x0.30x120°	6x3.5	501 TO 650 rpm
1	BS12 VBS12	L 120 T 32 GP 3	3 04 03 0268	H 120 T 32 GP 3	7x0.32x120°	6x3.5	600 TO 699 rpm
1	BS12 VBS12	L 130 T 35 FP 4	3 04 03 0274	H 130 T 35 FP 4	6x0.35x130°	6x3.5	700 TO 750 rpm
1	BCS12C	L 120 T 37 GP 4	3 04 03 0270	H 120 T 37 GP 4	7x0.37x120°	6x3.5	
1	BS12C VBS12C	L 120 T 37 FP 4	3 04 03 0271	H 120 T 37 FP 4	6x0.37x120°	6x3.5	
1	BCS12C VBCS12C	L 120 T 37 GP 4	3 04 03 0270	H 120 T 37 GP 4	7x0.37x120°	6x3.5	
2	VBCS 12 F	LL 140 T 48 F 200 P 4	3 06 03 0035	HL 140 T 48 F 200 P 4	6x0.48x140°	8x5.0	SHATED PIPE
2	BCS12D VBCS12E	LL 140 T 45 F 200 P 3	3 06 03 0030	HL 140 T 45 F 200 P 3	6x0.45x140°	8x5.0	SPECIAL RATING
2	VBCS37D VBCS37E	LL 130 T 45 H 200 P 4	3 06 03 0003	HL 130 T 45 H 200 P 4	8x0.45x130°	8x5.0	500÷600 rpm
2	BCS37E VBCS37F	LL 150 T 50 G 200 P 4	3 06 03 0055	HL 150 T 50 G 200 P 4	7x0.50x150°	8x5.0	550 rpm AND ABOVE
*3	BCS37E VBCS37	LL 150 T 50 G 556 P 4	3 30 03 0060	HL 150 T 50 G 556 P 4	7x0.50x150°	7x4.0	HEAVY FUEL COOLED
*3	GBCS37E GVBCS37F	LL 150 T 50 G 556 P 4	3 30 03 0060	HL 150 T 50 G 556 P 4	7x0.50x150°	7x4.0	DUAL FUEL
2	T47	LL 140 T 45 F 200 P 3	3 06 03 0030	HL 140 T 45 F 200 P 3	6x0.45x140°	8x5.0	BELOW 333 rpm

Scandic Diesel Services Inc.
 6360 Notre Dame East
 Montreal, Quebec
 H1N 2E1, Canada

Phone +1 514 228 1299
 Telefax +1 514 256 8237
 24 hours +1 514 566 1553
 Email sales@scandiserv.com

www.scandiserv.com

Scandic Diesel Services © 2009 - 2011
 All rights reserved