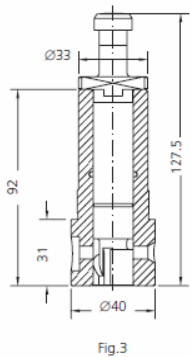
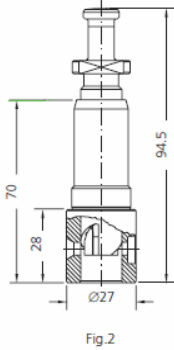
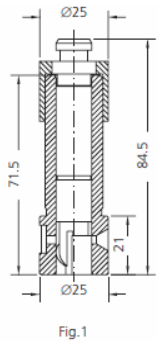




ANSALDO



PUMP ELEMENTS SUITABLE TO:					ANSALDO		
DRW.	ENGINE TYPE	SDS TYPE	SDS No.	ORIGINAL REFERENCE	TECHNICAL DATA		NOTES
					Ø	HELIX DIRECT.	
1	2131L	CRB-P 603	1 11 02 0020	PPK 13/4Z	13	LH	1 418 360 015
1	2131R	CRB-P 613	1 11 02 0115	PPK 73/4Z	13	RH	1 418 460 008
2	190	CRB-P 713	1 11 02 0526	1 418 360 188	16	LH	
3	320	CRB-P 443	1 14 02 0067	1 418 390 220	21	LH	
3	320S	CRB-P 436	1 14 02 0060	1 418 390 221	22	LH	

Scandic Diesel Services Inc.
 6360 Notre Dame East
 Montreal, Quebec
 H1N 2E1, Canada

Phone +1 514 228 1299
 Telefax +1 514 256 8237
 24 hours +1 514 566 1553
 Email sales@scandiserv.com

www.scandiserv.com

Scandic Diesel Services © 2009 - 2011
 All rights reserved



ANSALDO

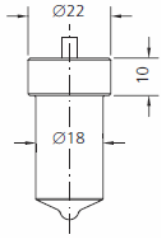


Fig.1

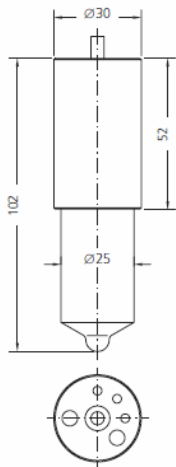


Fig.2

* = RAFFREDDATO - COOLED
 C = CROMATO - CHROMATED

NOZZLE ELEMENTS SUITABLE TO:				ANSALDO			
DRW.	ENGINE TYPE	SDS TYPE	SDS No.	ORIGINAL REFERENCE	SPRAY DATA	PRESS. STAGE	NOTES
1	Q265	L 140 T 260	3 04 02 0410	DL 140 T 260	8x0.30x140°	6x3.0	
1	2131LH-RH	L 150 T 418	3 04 02 0450	DL 150 T 418	8x0.20x150°	6x3.0	
*2	320	LF 150 U 44	3 32 02 0010	DLF 150 U 44	8x0.45x150°	8x4.5	

Scandic Diesel Services Inc.
 6360 Notre Dame East
 Montreal, Quebec
 H1N 2E1, Canada

Phone +1 514 228 1299
 Telefax +1 514 256 8237
 24 hours +1 514 566 1553
 Email sales@scandiserv.com

www.scandiserv.com

Scandic Diesel Services © 2009 - 2011
 All rights reserved