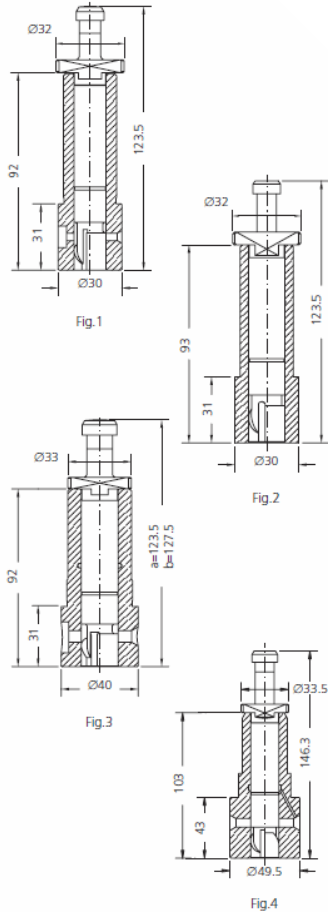




## BURMEISTER & WAIN – B&W MAN



PUMP ELEMENTS SUITABLE TO:				BURMEISTER & WAIN - B&W MAN			
DRW.	ENGINE TYPE	SDS TYPE	SDS No.	ORIGINAL REFERENCE	TECHNICAL DATA		NOTES
					Ø	HELIX DIRECT.	
1	W23HS-HU T23HH	CRB-P 027	1 12 02 0135	1 418 390 011	17	LH	21301-01 1824-0845
1	T23HH	CRB-P 028	1 12 02 0140	1 418 390 012	18	LH	31001-03 1086-0827
2	W23HS-HU MITSUI	CKX-P 050	1 12 14 0015	142101-2420	17	LH	C15
3a	ALPHA400	CRB-P 125	1 14 02 0205	2 418 399 009	17	LH	31001-2330-2685
3a	T23LH	CRB-P 126	1 14 02 0140	2 418 390 030	17	LH	P4037 HOLEBY
3a	W23LU	CRB-P 127	1 14 02 0156	2 418 390 047	17	LH	
3a	ALPHA T23HH, T23LH	CRB-P 120	1 14 02 0151	2 418 390 022	19	LH	P4009
3b	T23HH 25MTBH30	CRB-P 432	1 14 02 0050	1 418 390 217	18	LH	21301-01 1824-0842
4	ALPHA28	CRB-P 530	1 14 02 0174	2 418 390 212	20	LH	



## BURMEISTER & WAIN – B&W MAN

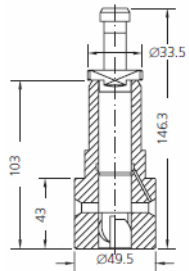


Fig.1

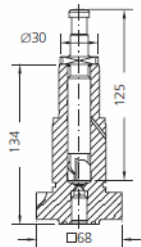


Fig.2

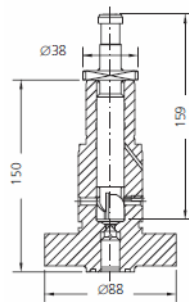


Fig.3

### PUMP ELEMENTS SUITABLE TO:

### BURMEISTER & WAIN - B&W MAN

DRW.	ENGINE TYPE	SDS TYPE	SDS No.	ORIGINAL REFERENCE	TECHNICAL DATA		NOTES
					Ø	HELIX DIRECT.	
1	LU28, S28	CRB-P 507	1 14 02 0171	2 418 390 207	20	LH	
1	ALPHA528	CRB-P 534	1 14 02 0175	2 418 390 214	20	LH	
1	DE28 - LU28 S28LH	CRB-P 509	1 14 02 0180	2 418 390 209	20	LH	61401-0711
2	LV23/30	CBW-P 540	1 30 31 0857	R36A06X	18	LH	31001-11/0550
2	LV 23/30	CBW-P 541	1 30 31 0871	20011541-3	18	LH	31001-11H2/0649 31001-0650
2	23/30A	CBW-P 542	1 30 31 0872	1636557-9 1627983-3 2502911-4	20	LH	
3	28/32	CBW-P 598	1 32 31 0859	2500900-7 1622627-3	22	LH	
3	28/32A	CBW-P 598H	1 32 31 0860	2504096-4 1635598-1	22	LH	

Scandic Diesel Services Inc.  
 6360 Notre Dame East  
 Montreal, Quebec  
 H1N 2E1, Canada

Phone +1 514 228 1299  
 Telefax +1 514 256 8237  
 24 hours +1 514 566 1553  
 Email sales@scandiserv.com

[www.scandiserv.com](http://www.scandiserv.com)

Scandic Diesel Services © 2009 - 2011  
 All rights reserved



## BURMEISTER & WAIN – B&W MAN

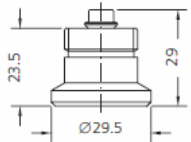


Fig.1

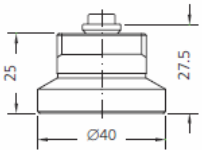


Fig.2

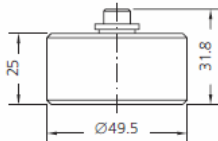


Fig.3

DELIVERY VALVES SUITABLE TO:				BURMEISTER & WAIN - B&W MAN		
DRW.	ENGINE TYPE	SDS TYPE	SDS No.	ORIGINAL REFERENCE	TECHNICAL DATA	NOTES
					Ø	
1	W3HS-HU T23HH	CRB-V 050	2 08 02 0005	1 418 562 001	8	PEV4.1Z
2	ALPHA T23LH, T23HH	CRB-V 102	2 10 02 0025	2 418 592 039	10	HOLEBY
2	T23HH T23LH - V23L	CRB-V 170	2 09 02 0015	2 418 592 003	9	
3	DE28-LU28	CRB-V 350	2 10 02 0027	2 418 590 003	10	



## BURMEISTER & WAIN – B&W MAN

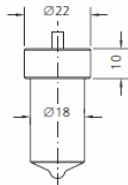


Fig.1

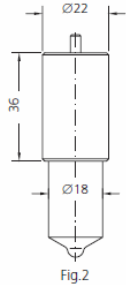


Fig.2

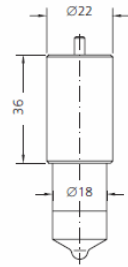


Fig.3

\* = RAFFREDDATO - COOLED  
 c = CROMATO - CHROMATED

NOZZLE ELEMENTS SUITABLE TO:				BURMEISTER & WAIN - B&W MAN			
DRW.	ENGINE TYPE	SDS TYPE	SDS No.	ORIGINAL REFERENCE	SPRAY DATA	PRESS. STAGE	NOTES
1	T23HH V23HU	L 150 T 1147	3 04 02 0755	DL 150 T 1147	8x0.34x150°	6x3.0	0 433 300 276
1	T23VH	L 145 T 1187	3 04 02 0807	DL 145 T 1187	8x0.34x145°	6x3.0	0 433 300 308
1	T23-T23H U-VU28L	L 145 T 1198	3 04 02 0821	DL 145 T 1198	8x0.30x145°	7x3.5	4050 31101(22)1677/1588
1	L25	L 145 T 1207	3 04 02 0830	DL 145 T 1207	9x0.30x145°	7x3.5	0 433 300 327
2	DE28-T28	LLB 145 T 6	3 14 02 0005	DLLB 145 T 6	8x0.42x145°	7x4.0	0 433 371 006
2	DE28-LU28	LLB 145 T 7	3 14 02 0006	DLLB 145 T 7	8x0.375x145°	7x4.0	0 433 371 007
*3	LU23	LLF 145 T 1	3 30 02 0201	DLLF 145 T 1	9x0.30x145°	7x3.5	0 433 351 053
*3	T23LH- T23HH T23HS-HU	LLF 145 T 8	3 30 02 0208	DLLF 145 T 8	8x0.30x145°	7x4.0	1614-D86 31101(04)1588/1300
*3	DE28-LU28 S28LH	LLF 145 T 9	3 30 02 0209	DLLF 145 T 9	8x0.40x145°	7x4.0	61401 1506/1509
*3	ALPHA T23HH-LH	LF 145 T 21	3 30 02 0021	DLF 145 T 21	8x0.34x145°	6x3.0	0 433 351 024
*3	LU23	LF 145 T 49	3 30 02 0049	DLF 145 T 49	8x0.34x145°	6x3.0	0 433 351 052

Scandic Diesel Services Inc.  
 6360 Notre Dame East  
 Montreal, Quebec  
 H1N 2E1, Canada

Phone +1 514 228 1299  
 Telefax +1 514 256 8237  
 24 hours +1 514 566 1553  
 Email sales@scandiserv.com

[www.scandiserv.com](http://www.scandiserv.com)

Scandic Diesel Services © 2009 - 2011  
 All rights reserved



## BURMEISTER & WAIN – B&W MAN

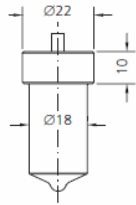


Fig.1

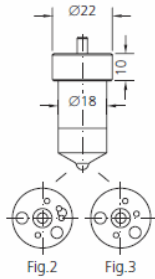


Fig.2

Fig.3

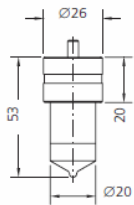


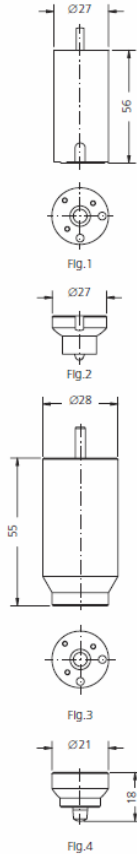
Fig.4

\* = RAFFREDDATO - COOLED  
 C = CROMATO - CHROMATED

NOZZLE ELEMENTS SUITABLE TO:				BURMEISTER & WAIN - B&W MAN			
DRW.	ENGINE TYPE	SDS TYPE	SDS No.	ORIGINAL REFERENCE	SPRAY DATA	PRESS. STAGE	NOTES
1	MAN 16/24	CBW-D 007	3 04 31 0009	X11.22107-1529	8x0.29x145°	6x3,5	
1	L16/24	CBW-D 008	3 04 31 0010	X11.22107-1529	8x0.27x145°	6x3.8	WGG827-145-22HH3
1	L23/30	CBW-D 010	3 04 31 0020	2014454-7	8x0.33x148°	7x4.0	
*2	23/30 23/30A	CBW-D 001	3 31 31 0005	2001548-6	8x0.32x145°	7x4.0	51402-04H-021
*2	28/32	CBW-D 003	3 31 31 0008	F11.22107-1047 X11.22107-1048	10x0.39x148°	7x4.0	
*3	28/32A	CBW-D 004	3 31 31 0010	F11.22107-1047 X11.22107-1049	9x0.41x156°	7x4.0	
*3	L23/30 L23/30A	CBW-D 005	3 31 31 0015	2009919-7	8x0.33x148°	7x4.0	
*4	6L28/32A	CBW-D 011	3 31 31 0020	F11.22107-1029	10x0.39x148°	7x4.0	61402-04H-7



## BURMEISTER & WAIN – B&W MAN



\* = RAFFREDDATO - COOLED  
 C = CROMATO - CHROMATED

NOZZLE ELEMENTS SUITABLE TO:				BURMEISTER & WAIN - B&W MAN			
DRW.	ENGINE TYPE	SDS TYPE	SDS No.	ORIGINAL REFERENCE	SPRAY DATA	PRESS. STAGE	NOTES
*1	25 MTBH 40 26 MTBH 40	CBW-D 035	3 19 31 0005	L 1750 31111 C 69 L 17 P 05 1128 B 90		8x4.4	
*2	25 MTBH 40	CBW-D 036	3 11 31 0005	L 17 A 50 H 17 B 25	4x0.39x110°		
*2	25 MTBH 40	CBW-D 037	3 11 31 0006	L 17 A 50 H 17 D 25	5x0.39x110°		
*2	26 MTBH 40	CBW-D 039	3 11 31 0008	L 17 A 50 F 17 K 25	8x0.38x144°		
*2	20 MTBH 30	CBW-D 041	3 11 31 0010	L 17 A 50 L 17 AP 25	6x0.35x124°		
*2	21 MTBH 30	CBW-D 042	3 11 31 0011	L 17 A 50 L 17 AP 25	8x0.34x144°		
*3	DE 35 VTF 62	CBW-D 050	3 19 31 0024	TAZ 61 343 QS 145		8x5.0	
*4	DE 35 VTF 62	CBW-D 052	3 11 31 0052	165538 x 43	3x0.45		

Scandic Diesel Services Inc.  
 6360 Notre Dame East  
 Montreal, Quebec  
 H1N 2E1, Canada

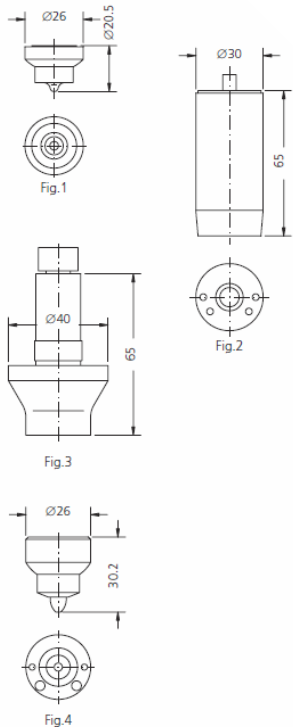
Phone +1 514 228 1299  
 Telefax +1 514 256 8237  
 24 hours +1 514 566 1553  
 Email sales@scandiserv.com

[www.scandiserv.com](http://www.scandiserv.com)

Scandic Diesel Services © 2009 - 2011  
 All rights reserved



## BURMEISTER & WAIN – B&W MAN



\* = RAFFREDDATO - COOLED  
 C = CROMATO - CHROMATED

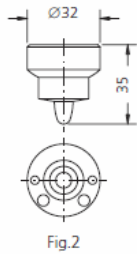
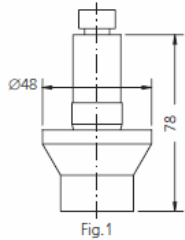
### NOZZLE ELEMENTS SUITABLE TO: BURMEISTER & WAIN - B&W MAN

DRW.	ENGINE TYPE	SDS TYPE	SDS No.	ORIGINAL REFERENCE	SPRAY DATA	PRESS. STAGE	NOTES
1	ALPHA 400	CBW-D 065	3 11 31 0020		10x0.30x120°		L17AY25627D78
1	ALPHA 490	CBW-D 066	3 11 31 0021		9x0.35x120°		F7271 F62189
*2	ALPHA 490	CBW-D 062	3 19 31 0012			10x5.3	_17P0389D 037 L17B0589D 036
*3	50 VT 2 BF 90	CBW-D 091	3 21 31 0010			10x4.5	VK 17 M 03 VK 17 G 05
*4	50 VT 2 BF 110	CBW-D 094	3 12 31 0010		3x0.65		
*4	42 VT 2 BF 90	CBW-D 097					
*4	50 VT 2 BF 110	CBW-D 096	3 12 31 0020		3x0.67		166843374/71
*4	50 VTF 110	CBW-D 098	3 12 31 0030		3x0.70		158881374/71
*4	62 VTF 115	CBW-D 099	3 12 31 0035		3x0.78		177104



Scandic Diesel Services Inc.  
*"It's smooth sailing from here"*

## BURMEISTER & WAIN – B&W MAN



\* = RAFFREDDATO - COOLED  
 C = CROMATO - CHROMATED

NOZZLE ELEMENTS SUITABLE TO:				BURMEISTER & WAIN - B&W MAN			
DRW.	ENGINE TYPE	SDS TYPE	SDS No.	ORIGINAL REFERENCE	SPRAY DATA	PRESS. STAGE	NOTES
*1	62 VTBF 140	CBW-D 120	3 22 31 0005			12x6.0	472898-10
*2	62 VT 2 BF 115	CBW-D 122	3 12 31 0060		3x0.73		16697990303
*2	62 VT 2 BF 140	CBW-D 125	3 12 31 0063		3x0.90		VT17C50VT17655
*2	84 VT 2 BF 180	CBW-D 126	3 12 31 0064		3x1.10		155EC83
*2	62 VT 2 BF 115	CBW-D 128	3 12 31 0066		4X0.71		
*2	K 62 EF	CBW-D 134	3 12 31 0072		4x0.84		
*2	84 VT 2 BF 180	CBW-D 136	3 12 31 0074		4x0.95		41026040

Scandic Diesel Services Inc.  
 6360 Notre Dame East  
 Montreal, Quebec  
 H1N 2E1, Canada

Phone +1 514 228 1299  
 Telefax +1 514 256 8237  
 24 hours +1 514 566 1553  
 Email sales@scandiserv.com

[www.scandiserv.com](http://www.scandiserv.com)

Scandic Diesel Services © 2009 - 2011  
 All rights reserved



## BURMEISTER & WAIN – B&W MAN

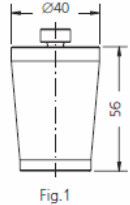


Fig.1

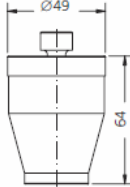


Fig.2

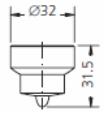


Fig.3

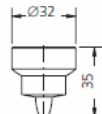


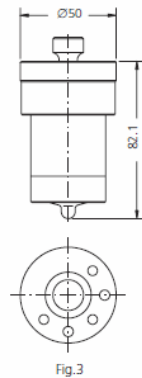
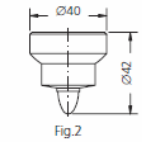
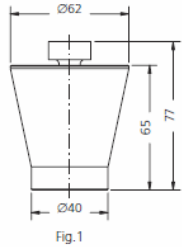
Fig.4

\* = RAFFREDDATO - COOLED  
 C = CROMATO - CHROMATED

NOZZLE ELEMENTS SUITABLE TO:				BURMEISTER & WAIN - B&W MAN			
DRW.	ENGINE TYPE	SDS TYPE	SDS No.	ORIGINAL REFERENCE	SPRAY DATA	PRESS. STAGE	NOTES
*1	42 VT 2 BF 90	CBW-D 200	3 21 31 0015			8x5.0	
*2	74 VT 2 BF 160 84 VT 2 BF 180 K 84 EF	CBW-D 205	3 22 31 0020			10x6.0	
*3	50 VT 2 BF 110	CBW-D 209	3 12 31 0129		3x0.75		
*3	50 VT 2 BF 110	CBW-D 210	3 12 31 0130		3x0.65		
*3	50 VT 2 BF 110	CBW-D 211	3 12 31 0131		3x0.78		
*3	50 VT 2 BF 110	CBW-D 212	3 12 31 0132		3x0.95		43198071-78
*3	K 42 EF	CBW-D 213	3 12 31 0133		3x0.65		
*3	K 42 EF	CBW-D 214	3 12 31 0134		3x0.70		
*4	84 VT 2 BF 180	CBW-D 219	3 12 31 0139		4x0.85		
*4	74 VTB 164 K 84 EF	CBW-D 220	3 12 31 0140		4x0.95		
*4	74 VT 2 BF 160	CBW-D 221	3 12 31 0141		4x1.00		VT17C50VX17G55
*4	K 74 EF	CBW-D 222	3 12 31 0142		4x1.05		44107064
*4		CBW-D 223	3 12 31 0143		3x0.65		4319893
*4	K 62 EF	CBW-D 224	3 12 31 0144		3x0.95		57732970-95



## BURMEISTER & WAIN – B&W MAN



\* = RAFFREDDATO - COOLED  
 C = CROMATO - CHROMATED

NOZZLE ELEMENTS SUITABLE TO:				BURMEISTER & WAIN - B&W MAN			
DRW.	ENGINE TYPE	SDS TYPE	SDS No.	ORIGINAL REFERENCE	SPRAY DATA	PRESS. STAGE	NOTES
*1	K 98 FF	CBW-D 250	3 23 31 0005			12x7.0	3-410409-3 4-410283-2 4-410707-6
*2	K 98 FF	CBW-D 251	3 12 31 0175		4x1.2		3-429537-9 2-428067-6
*3	H 45 U	CBW-D 400	3 36 31 0005		6x0.52x162°+ 6x0.52x162°	10x5.5	323037333
*3	H 50 U	CBW-D 401	3 36 31 0006		6x0.71x165°+ 6x0.71x165°	10x7.0	

Scandic Diesel Services Inc.  
 6360 Notre Dame East  
 Montreal, Quebec  
 H1N 2E1, Canada

Phone +1 514 228 1299  
 Telefax +1 514 256 8237  
 24 hours +1 514 566 1553  
 Email sales@scandiserv.com

[www.scandiserv.com](http://www.scandiserv.com)

Scandic Diesel Services © 2009 - 2011  
 All rights reserved