



## COCKERIL

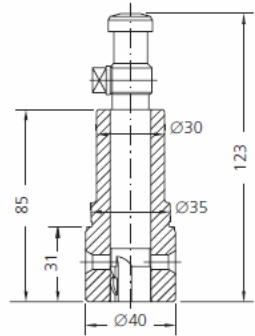


Fig.1

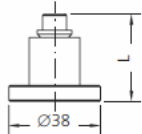


Fig.2

a 36.5  
 L = b 36  
 c 34.5

PUMP ELEMENTS SUITABLE TO:					COCKERIL		
DRW.	ENGINE TYPE	SDS TYPE	SDS No.	ORIGINAL REFERENCE	TECHNICAL DATA		NOTES
					Ø	HELIX DIRECT.	
1	T240C-O TR240C-O	CBR-P 105	1 14 03 0055	6/188	20	LH	
1	T240C-O	CBR-P 102	1 14 03 0010	6/110 E	20	LH	UPRATE
1	GTR240C-O	CBR-P 102	1 14 03 0010	6/110 E	20	LH	
2a	T240C-O TR240C-O	CBR-V 100	2 13 03 0100	21/262	12		
2b	T240C-O	CBR-V 085	2 13 03 0105	6/284	10		UPRATE
2c	GTR240C-O	CBR-V 050	2 15 03 0010	6/129	12		



## COCKERIL

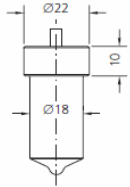


Fig.1

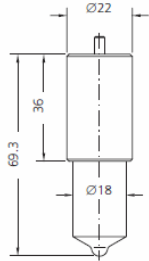


Fig.2

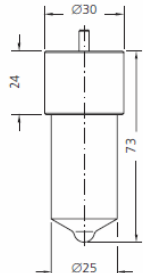


Fig.3

NOZZLE ELEMENTS SUITABLE TO:				COCKERIL			
DRW.	ENGINE TYPE	SDS TYPE	SDS No.	ORIGINAL REFERENCE	SPRAY DATA	PRESS. STAGE	NOTES
1		L 130 T 30	3 04 02 0240	DL 130 T 30	6x0.25x130°	6x3.0	0 433 300 093
1		L 150 T 937	3 04 02 0566	DL 150 T 937	10x0.35x150°	6x3.0	0 433 300 178
2	T 240C-O TR240C-O	LL 150 T 38 L 748 P 8	3 06 03 0064	HL 150 T 38 L 748 P 8	10x 0.38x150°	8x5.0	
3	608A	L 160 U 256	3 05 02 0060	DL 160 U 256	9x0.45x160°	8x4.0	0 433 400 081