



DE INDUSTRIE

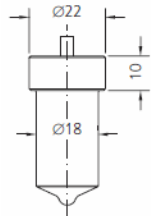


Fig.1

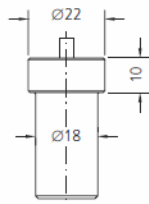


Fig.2

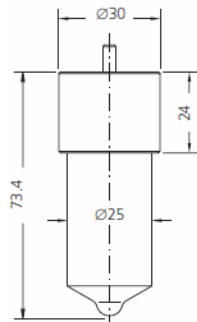


Fig.3

NOZZLE ELEMENTS SUITABLE TO:

DE INDUSTRIE

DRW.	ENGINE TYPE	SDS TYPE	SDS No.	ORIGINAL REFERENCE	SPRAY DATA	PRESS. STAGE	NOTES
1	D6-D6D	L 130 T 205	3 04 02 0360	DL 130 T 205	8x0.30x130°	6x3.0	0 433 300 102
1	D7HDDH-DUL	L 135 T 1111	3 04 02 0731	DL 135 T 1111	8x0.45x135°	7x4.7	0 433 300 256
1	D41HS, HDN	L 145 T 1156	3 04 02 0766	DL 145 T 1156	8x0.27x145°	7x3.5	0 433 300 285
2	RUB215	LOT 135 A 369 P 9	3 04 03 0213	HOT 135 A 369 P 9	1x1.35	6x3.5	
3	D8HDDN	L 130 U 1103	3 05 02 0155	DL 130 U 1103	8x0.55x130°	8x4.0	0 433 400 111