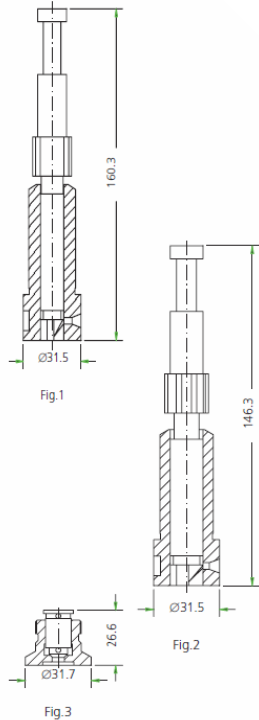




FAIRBANKS-MORSE



PUMP ELEMENTS SUITABLE TO:					FAIRBANKS-MORSE		
DRW.	ENGINE TYPE	SDS TYPE	SDS No.	ORIGINAL REFERENCE	TECHNICAL DATA		NOTES
					Ø	HELIX DIRECT.	
1		CFE-P 001	1 24 23 0010	N-535 AFB-BC	12.7	RH	
2		CFE-P 005	1 24 23 0005	C-535 AFB-AC	12.7	LH	
2		CFE-P 006	1 24 23 0015	C-535 AFB-CC	15.875	RH	
2		CFE-P 010	1 24 23 0020	16-600-330	15.875	LH	
2		CFE-P 011	1 24 23 0025	16-600-338	15.875	RH	
2		CFE-P 012	1 24 23 0030	16-605-477	15.875	LH	
2		CFE-P 013	1 24 23 0031	16-605-478	15.875	RH	
3		CFE-V 005	2 16 23 0005	C-755 AFB-B9	12.7		
3		CFE-V 006	2 16 23 0010	16-600-333	12.7		

Scandic Diesel Services Inc.
 6360 Notre Dame East
 Montreal, Quebec
 H1N 2E1, Canada

Phone +1 514 228 1299
 Telefax +1 514 256 8237
 24 hours +1 514 566 1553
 Email sales@scandiserv.com

www.scandiserv.com

Scandic Diesel Services © 2009 - 2011
 All rights reserved



FAIRBANKS-MORSE

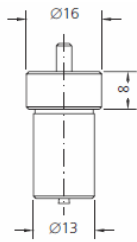


Fig.1

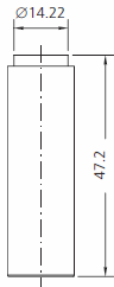


Fig.2

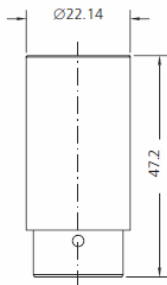


Fig.3

NOZZLE ELEMENTS SUITABLE TO:				FAIRBANKS-MORSE			
DRW.	ENGINE TYPE	SDS TYPE	SDS No.	ORIGINAL REFERENCE	SPRAY DATA	PRESS. STAGE	NOTES
1	38D81/8	N 8 R 191	3 01 02 0000	DNO R 191	1x2.0	6x3.5	0 434 100 007
2		CFE-D 002	3 04 23 0015	C 202 AFB C-C	1x2.4	7.15x3.9	
2		CFE-D 004	3 04 23 0005	C 202 AFB A-C	1x3.17	7.15x5.5	
3		CFE-D 006	3 04 23 0010	C 202 AFB B-C	1x2.4	7.15x3.9	