



HEDEMORA A/B

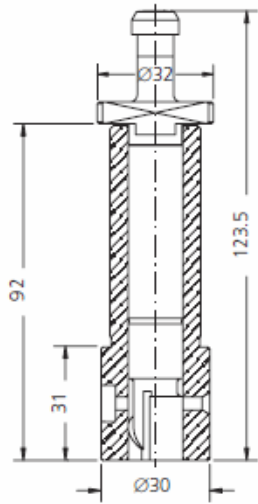


Fig.1

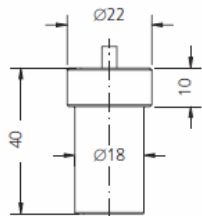


Fig.2

PUMP ELEMENTS SUITABLE TO:					HEDEMORA A/B		
DRW.	ENGINE TYPE	SDS TYPE	SDS No.	ORIGINAL REFERENCE	TECHNICAL DATA		NOTES
					Ø	HELIX DIRECT.	
1	VA	CRB-P 005	1 12 02 0025	PPK 2/5Z	14	LH	
1	VA	CBR-P 085	1 12 03 0085	3/412 D	14	LH	185 m/m BORE

NOZZLE ELEMENTS SUITABLE TO:					HEDEMORA A/B		
DRW.	ENGINE TYPE	SDS TYPE	SDS No.	ORIGINAL REFERENCE	SPRAY DATA	PRESS. STAGE	NOTES
2	VA	N4T208	3 04 02 0018	DN4 T 208	1x2.0	7x4.5	185 m/m BORE