



Scandic Diesel Services Inc.
"It's smooth sailing from here"

ISOTTA FRASCHINI

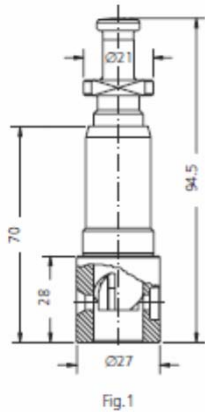


Fig.1

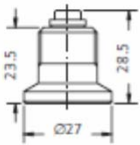


Fig.2

PUMP ELEMENTS SUITABLE TO:				ISOTTA FRASCHINI			
DRW.	ENGINE TYPE	SDS TYPE	SDS No.	ORIGINAL REFERENCE	TECHNICAL DATA		NOTES
					Ø	HELIX DIRECT.	
1	6V ID 36 SS	CRB-P 714	1 11 02 0530	1 418 460 188	16	RH	
2	ID 36 SS	CRB-V 520	2 13 02 0010	1 418 560 003	13		

Scandic Diesel Services Inc.
 6360 Notre Dame East
 Montreal, Quebec
 H1N 2E1, Canada

Phone +1 514 228 1299
 Telefax +1 514 256 8237
 24 hours +1 514 566 1553
 Email sales@scandiserv.com

www.scandiserv.com

Scandic Diesel Services © 2009 - 2011
 All rights reserved



Scandic Diesel Services Inc.
"It's smooth sailing from here"

ISOTTA FRASCHINI

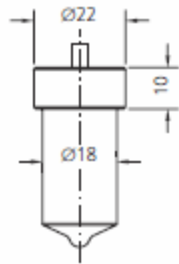


Fig.1

NOZZLE ELEMENTS SUITABLE TO:				ISOTTA FRASCHINI			
DRW.	ENGINE TYPE	SDS TYPE	SDS No.	ORIGINAL REFERENCE	SPRAY DATA	PRESS. STAGE	NOTES
1	12 YCL	L 150 T 1073	3 04 02 0715	DL 150 T 1073	5x0.61x150°	7x4.5	BREDA PAXMAN 0 433 300 239
1	ID 26	L 160 T 1148	3 04 02 0756	DL 160 T 1148	8x0.35x160°	7x3.5	PAXMAN 0 433 300 277

Scandic Diesel Services Inc.
 6360 Notre Dame East
 Montreal, Quebec
 H1N 2E1, Canada

Phone +1 514 228 1299
 Telefax +1 514 256 8237
 24 hours +1 514 566 1553
 Email sales@scandiserv.com

www.scandiserv.com

Scandic Diesel Services © 2009 - 2011
 All rights reserved