



**MAN**

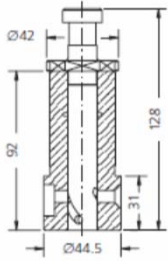


Fig.1

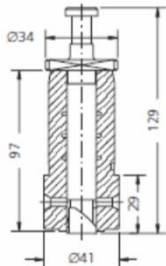


Fig.2

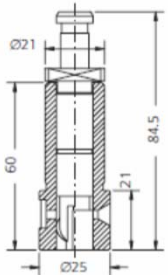


Fig.3

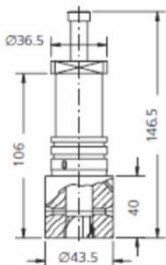


Fig.4

Scandic Diesel Services Inc.  
 6360 Notre Dame East  
 Montreal, Quebec  
 H1N 2E1, Canada

Phone +1 514 228 1299  
 Telefax +1 514 256 8237  
 24 hours +1 514 566 1553  
 Email sales@scandiserv.com

[www.scandiserv.com](http://www.scandiserv.com)

Scandic Diesel Services © 2009 - 2011  
 All rights reserved

PUMP ELEMENTS SUITABLE TO:					MAN		NOTES
DRW.	ENGINE TYPE	SDS TYPE	SDS No.	ORIGINAL REFERENCE	Ø	HELIX DIRECT.	
1	GV 23.5/33 A	CMN-P 001	1 14 26 0005	635.1108 635.1109	14	LH	4D 16563 4D 16564
1		CMN-P 002 H	1 14 26 0010	F11.20004-0009 F11.20055-0007	14	LH	HEAVY FUEL
1		CMN-P 003	1 14 26 0015	635.1102 635.1103	15	LH	4D 16555 4D 16556
1	GV 23.5/33 AT/ATL	CMN-P 004 H	1 14 26 0020	F11.20004-0005 F11.20055-0003	15	LH	HEAVY FUEL
1		CMN-P 008	1 14 26 0025	635.1110 635.1111	17	LH	4D 16565 4D 16566
1		CMN-P 009 H	1 14 26 0030	F11.20004-0010 F11.20055-0008	17	LH	HEAVY FUEL
1	GV 30/45 AT	CMN-P 020	1 14 26 0033	635.1104 635.1105	19	LH	4D 16559 4D 16560
1	GV 30/45 AT/ATL	CMN-P 010	1 14 26 0035	635.1106 635.1107	23	LH	4D 16561 4D 16562
1		CMN-P 011 H	1 14 26 0040	F11.20004-0008 F11.20055-0006	23	LH	HEAVY FUEL
2	MAN 20/27	CMN-P 005	1 14 26 0050	E 11 20055-1172	17	LH	1119
3	MAN 17.5/22	CRB-P 644	1 11 02 0285	EPPK 474 P3	12	LH	1 418 360 032
4	MAN 16/24	CMN-P 025	1 14 26 0026	10-88886	17	LH	



**MAN**

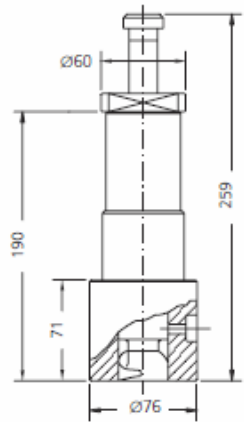


Fig.1

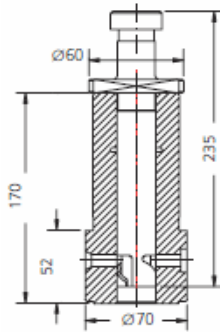


Fig.2

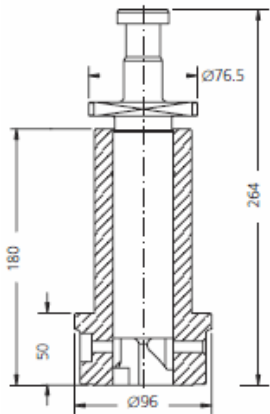


Fig.3

PUMP ELEMENTS SUITABLE TO:					MAN		
DRW.	ENGINE TYPE	SDS TYPE	SDS No.	ORIGINAL REFERENCE	TECHNICAL DATA		NOTES
					Ø	HELIX DIRECT.	
1	LV 40/54	CMN-P 035	1 26 26 0015	D11.20004-0212	34	LH	
2	40/54	CMN-P 037	1 26 26 0017	MAGASA	34	LH	
3	VV 52/55	CMN-P 040	1 26 26 0020	D11.20004-0130 D11.20055-0168	42	LH	

Scandic Diesel Services Inc.  
 6360 Notre Dame East  
 Montreal, Quebec  
 H1N 2E1, Canada

Phone +1 514 228 1299  
 Telefax +1 514 256 8237  
 24 hours +1 514 566 1553  
 Email sales@scandiserv.com

[www.scandiserv.com](http://www.scandiserv.com)

Scandic Diesel Services © 2009 - 2011  
 All rights reserved



**MAN**

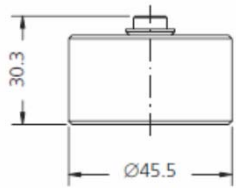


Fig.1

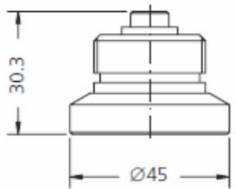


Fig.2

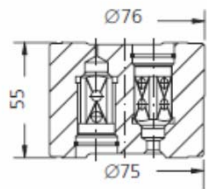


Fig.3

Scandic Diesel Services Inc.  
 6360 Notre Dame East  
 Montreal, Quebec  
 H1N 2E1, Canada

Phone +1 514 228 1299  
 Telefax +1 514 256 8237  
 24 hours +1 514 566 1553  
 Email sales@scandiserv.com

[www.scandiserv.com](http://www.scandiserv.com)

Scandic Diesel Services © 2009 - 2011  
 All rights reserved

<b>DELIVERY VALVES SUITABLE TO:</b>					<b>MAN</b>	
<b>DRW.</b>	<b>ENGINE TYPE</b>	<b>SDS TYPE</b>	<b>SDS No.</b>	<b>ORIGINAL REFERENCE</b>	<b>TECHNICAL DATA</b>	<b>NOTES</b>
					$\emptyset$	
1	GV 23.5/33 GV 30/45 AT/ATL	CMN-V 023	2 10 26 0100	4D 21373 5D 18512	10	
2	GV 30/45 AT GV 30/45 ATL	CMN-V 024	2 10 26 0101		10	
3	MAN 40/54 A	CMN-V 520	2 53 26 0020		2x18	



**MAN**

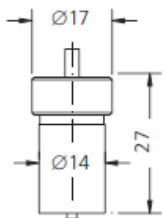


Fig.1

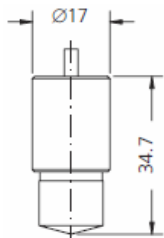


Fig.2

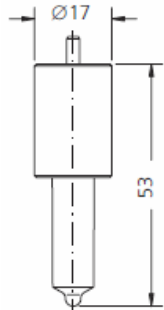


Fig.3

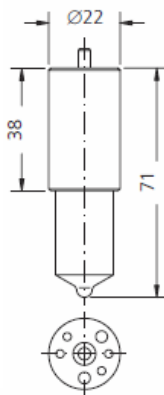


Fig.4

\* = RAFFREDDATO - COOLED  
 C = CROMATO - CHROMATED

NOZZLE ELEMENTS SUITABLE TO:					MAN		
DRW.	ENGINE TYPE	SDS TYPE	SDS No.	ORIGINAL REFERENCE	SPRAY DATA	PRESS. STAGE	NOTES
1	17.5/22 A	N 0 SD 130	3 01 02 0100	DNO SD 130	1x2.0	6x2.5	K11-22007-0003
2	RV/W 16/18 T.TL	L 15 S 1017	3 02 02 0400	DL 15 S 1017	1x1x15°	6x3.0	11.22004-0054
3	20/27	LLZ 156 S 948	3 03 02 1390	DLLZ 156 S 948	5x0.30x156°+ 4x0.28x156°	6x3.0	0433271460 GAS OIL
*4	20/27	LLF 156 T 14	3 30 02 0214	DLLF 156 T 14	5x0.30x156°+ 4x0.26x156°	7x4.0	11.22107-0815 HEAVY FUEL
*4	20/27 HF	LLF 156 T 16	3 30 02 0216	DLLF 156 T 16	5x0.26x156°+ 4x0.23x156°	7x4.0	11.22107-0952 HEAVY FUEL

Scandic Diesel Services Inc.  
 6360 Notre Dame East  
 Montreal, Quebec  
 H1N 2E1, Canada

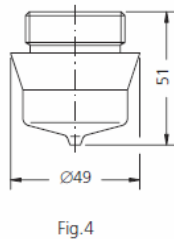
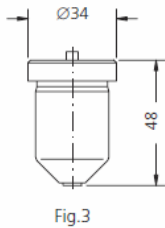
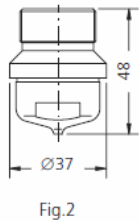
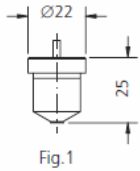
Phone +1 514 228 1299  
 Telefax +1 514 256 8237  
 24 hours +1 514 566 1553  
 Email sales@scandiserv.com

[www.scandiserv.com](http://www.scandiserv.com)

Scandic Diesel Services © 2009 - 2011  
 All rights reserved



**MAN**



NOZZLE ELEMENTS SUITABLE TO:				MAN			
DRW.	ENGINE TYPE	SDS TYPE	SDS No.	ORIGINAL REFERENCE	SPRAY DATA	PRESS. STAGE	NOTES
1	RV 22/30 A VV 22/30 A	CMN-D 001	3 04 26 0005	E11.22105-0019 F11.22106-0026	1x2.0	5x3.7	
2	RV 22/30 A VV 22/30 A-ATL	CMN-D 002	3 17 26 0005	F11.22107-0091	8x0.30x70°		
3	GV 22/33 - GV 23.5/33 GV 24/30 - GV 28.5/42	CMN-D 003	3 16 26 0005	E11.22105-0005 5D 11979	1x3.0	8x6.0	
3	GV 30/45 VV 30/45	CMN-D 003 H	3 16 26 0010	E11.22105-0005 F11.22106-0001	1x3.0	8x6.0	HEAVY FUEL
4	GV 22/33 oA	CMN-D 004	3 17 26 0010	117938 POS. 606	8x0.25x70°		612/5-606
4	GV 22/33 mA	CMN-D 005	3 17 26 0011	117938 POS. 706	8x0.30x70°		
4	GV 28.5/42 oA	CMN-D 010	3 17 26 0016	117938 POS. 806	8x0.28x70°		806
4	GV 28.5/42 mA	CMN-D 011	3 17 26 0017	117938 POS. 906	8x0.32x70°		906
4	GV/VV 30/45 oA-mA	CMN-D 016	3 17 26 0022	4D 16391	8x0.35x66°		612/1126
4	GV/VV 30/45 mA	CMN-D 017	3 17 26 0023	4D 16392	8x0.40x65°		
4	GV/VV 30/45 oA	CMN-D 018	3 17 26 0024	4D 18619	8x0.32x66°		
4	GV/VV 30/45 mA	CMN-D 019	3 17 26 0025	4D 18676	8x0.38x65°		612/1124
4	GV 23.5/33 mA	CMN-D 021	3 17 26 0027	4D 21014	8x0.32x57.5°		612/1082 1062-1063
4	GV 23.5/33 mA L	CMN-D 022	3 17 26 0028	4D 21015	8x0.34x57.5°		
4	GV 23.5/33 oA	CMN-D 024	3 17 26 0030	4D 21013	9x0.24x70°		612/1081

Scandic Diesel Services Inc.  
 6360 Notre Dame East  
 Montreal, Quebec  
 H1N 2E1, Canada

Phone +1 514 228 1299  
 Telefax +1 514 256 8237  
 24 hours +1 514 566 1553  
 Email sales@scandiserv.com

[www.scandiserv.com](http://www.scandiserv.com)

Scandic Diesel Services © 2009 - 2011  
 All rights reserved



Scandic Diesel Services Inc.  
*"It's smooth sailing from here"*

**MAN**

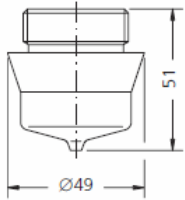


Fig.4

NOZZLE ELEMENTS SUITABLE TO:				MAN			
DRW.	ENGINE TYPE	SDS TYPE	SDS No.	ORIGINAL REFERENCE	SPRAY DATA	PRESS. STAGE	NOTES
4	GV/VV 30/45 oA(DG)	CMN-D 025	3 17 26 0031	4D 19645	8x0.30x66°		
4	GV 23.5/33 oA	CMN-D 026	3 17 26 0032	4D 21012	9x0.22x70°		612/1080
4	GV 30/45	CMN-D 027	3 17 26 0033	4D 11529	9x0.28x66°		612-1123 F11.22107-0003
4	GV 23.5/33	CMN-D 020	3 17 26 0026	4D 16222	4x0.28x65° 4x0.32x65°		

Scandic Diesel Services Inc.  
 6360 Notre Dame East  
 Montreal, Quebec  
 H1N 2E1, Canada

Phone +1 514 228 1299  
 Telefax +1 514 256 8237  
 24 hours +1 514 566 1553  
 Email sales@scandiserv.com

[www.scandiserv.com](http://www.scandiserv.com)

Scandic Diesel Services © 2009 - 2011  
 All rights reserved



**MAN**

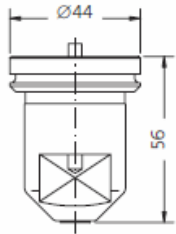


Fig.1

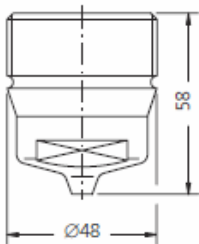


Fig.2

**NOZZLE ELEMENTS SUITABLE TO:**

**MAN**

DRW.	ENGINE TYPE	SDS TYPE	SDS No.	ORIGINAL REFERENCE	SPRAY DATA	PRESS. STAGE	NOTES
1	RV 40/54 VV 40/54	CMN-D 035	3 16 26 0015	E11.22105-0084 F11.22106-0086	1x4.5	11x7.5	
1	RV 40/54 VV 40/54 Y	CMN-D 036 H	3 16 26 0020	E11.22105-0085 F11.22106-0086	1x4.5	11x7.5	HEAVY FUEL
1	GV 40/60 - GV 52/74 MV 40/46- KV 45/66	CMN-D 037 H	3 16 26 0025	E11.22105-0087 F11.22106-0087	1x4.5	11x8.0	HEAVY FUEL
1	RV 40/54 VV 40/54	CMN-D 039 H	3 16 26 0029	X11.22105-0182	1x4.5	11x7.5	HEAVY FUEL
2	GV 40/60	CMN-D 040	3 17 26 0040	4D 10243	10x0.48x70°		
2	GV 52/74	CMN-D 046	3 17 26 0046		10x0.60x72°		
2	RV-VV 40/54	CMN-D 048	3 17 26 0048	X11.22107.0109	10x0.58x70°		
2	RV-VV 40/54	CMN-D 049	3 17 26 0049	X11.22107.0108	10x0.60x70°		
2	GV 40/60	CMN-D 050	3 17 26 0050	F11.22107.0124	10x0.45x70°		

Scandic Diesel Services Inc.  
 6360 Notre Dame East  
 Montreal, Quebec  
 H1N 2E1, Canada

Phone +1 514 228 1299  
 Telefax +1 514 256 8237  
 24 hours +1 514 566 1553  
 Email sales@scandiserv.com

[www.scandiserv.com](http://www.scandiserv.com)

Scandic Diesel Services © 2009 - 2011  
 All rights reserved



**MAN**

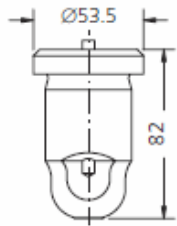


Fig.3

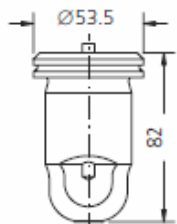


Fig.4

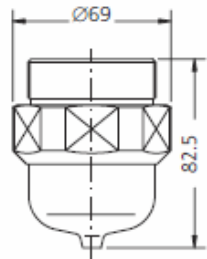


Fig.5

NOZZLE ELEMENTS SUITABLE TO:					MAN		
DRW.	ENGINE TYPE	SDS TYPE	SDS No.	ORIGINAL REFERENCE	SPRAY DATA	PRESS. STAGE	NOTES
3	RV/VV 52/55	CMN-D 055 H	3 22 26 0005	E11.22105.0067 F11.22106.0064	1x4.5	12x8.0	HEAVY FUEL
4 <sup>c</sup>	VV 52/55 A	CMN-D 056 H	3 22 26 0010	F11.22131.0050	1x4.5	12x8.0	HEAVY FUEL
5	RV/VV 52/55	CMN-D 060	3 17 26 0060		10x0.75x70°		
5	RV/VV 52/55	CMN-D 061	3 17 26 0061	E11.22107.0151 X11.22107.0284	9x0.78x77°		
5	RV/VV 52/55	CMN-D 062	3 17 26 0062	9x0.85x77°			
5	L 52/55	CMN-D 063	3 17 26 0063	12x0.74x79°			
5	52/55 A	CMN-D 064	3 17 26 0064	10x0.74x77°			

Scandic Diesel Services Inc.  
 6360 Notre Dame East  
 Montreal, Quebec  
 H1N 2E1, Canada

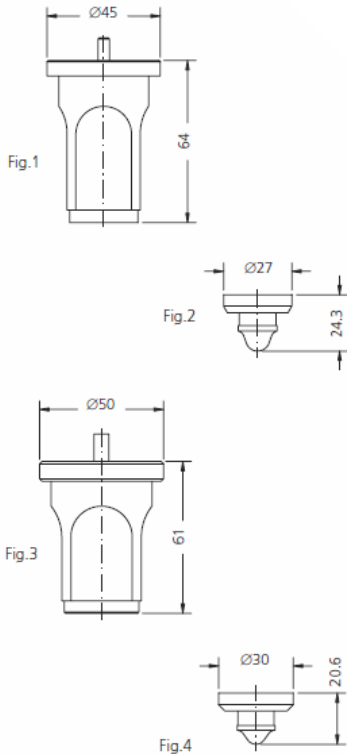
Phone +1 514 228 1299  
 Telefax +1 514 256 8237  
 24 hours +1 514 566 1553  
 Email sales@scandiserv.com

[www.scandiserv.com](http://www.scandiserv.com)

Scandic Diesel Services © 2009 - 2011  
 All rights reserved



**MAN**



NOZZLE ELEMENTS SUITABLE TO:					MAN		
DRW.	ENGINE TYPE	SDS TYPE	SDS No.	ORIGINAL REFERENCE	SPRAY DATA	PRESS. STAGE	NOTES
1	DZ 53/76 - DZ 53/80 DZ 60/90 - DZ 60/110	CMN-D 070	3 21 26 0005	4D 14852	1x4.5	10x8.0	
1	GZ 52/70 - GZ 52/90 KZ 57/80 - KZ 60/105	CMN-D 071 H	3 21 26 0006	4D 14853	1x4.5	10x8.0	HEAVY FUEL LIFT 0.8 m/m
2	KZ 57/80	CMN-D 076 F	3 12 26 0109	X11.22107-0088	10x0.64x69°		
3 <sup>c</sup>	KZ 65/120 - KZ 68/120 KZ 70/120 - KV 65/140 DZ 70/120	CMN-D 080	3 22 26 0020	X11.22105-0007 F11.22106-0010 X11.22106-0011	1x6.0	12x10	LIFT 1.2 m/m
		CMN-D 081 H	3 22 26 0021	E11.22105-0006 X11.22105-0008 F11.22106-0010			LIFT 1.2 m/m HEAVY FUEL
4	KV 65/140	CMN-D 085 a	3 12 26 0140		10x0.70x68°		
4	KZ 70/120	CMN-D 085 c	3 12 26 0142		10x0.50x60°		
4	DZ 70/120	CMN-D 085 d	3 12 26 0143		10x0.55x68°		
4	KZ 70/120	CMN-D 085 F	3 12 26 0145		10x0.65x68°		
4	KZ 57/86	CMN-D 085 Q	3 12 26 0155	F11.22107.0036	10x0.75x68°		
4	KZ 70/120	CMN-D 086 R	3 12 26 0156	F11.22107.0064	10x0.80x69°		
4	KZ 70/120	CMN-D 086 T	3 12 26 0158	F11.22107.0585	12x0.64x71°		

\* = RAFFREDDATO - COOLED  
 c = CROMATO - CHROMATED



**MAN**

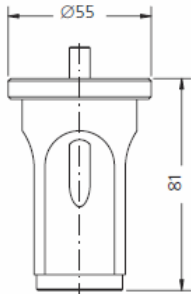


Fig.1

NOZZLE ELEMENTS SUITABLE TO:				MAN			
DRW.	ENGINE TYPE	SDS TYPE	SDS No.	ORIGINAL REFERENCE	SPRAY DATA	PRESS. STAGE	NOTES
1	KZ 78/140	CMN-D 120	3 22 26 0030	X11.22105-0003 F11.22106-0004 X11.22106-0007 E11.22105-0002		14x11.5	LIFT 1.2 m/m
1	KZ 78/155	CMN-D 121 H	3 22 26 0031	E11.22105-0002 X11.22105-0004 F11.22106-0004 X11.22106-0005		14x11.5	HEAVY FUEL
1	KZ 84/160 KZ 86/160	CMN-D 122	3 22 26 0035	E11.22105-0002 X11.22105-0003 F11.22106-0004 X11.22106-0008		14x11.5	
1	KZ 93/170	CMN-D 123 H	3 22 26 0032	X11.22105-0004 F11.22106-0004 X11.22106-0006		14x11.5	HEAVY FUEL LIFT 1.4 m/m



Scandic Diesel Services Inc.  
*"It's smooth sailing from here"*

**MAN**

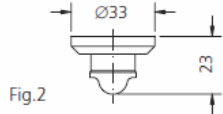


Fig.2

NOZZLE ELEMENTS SUITABLE TO:					MAN		
DRW.	ENGINE TYPE	SDS TYPE	SDS No.	ORIGINAL REFERENCE	SPRAY DATA	PRESS. STAGE	NOTES
2	KZ 78/155	CMN-D 130 a	3 12 26 0170		10x0.75x68°		
2	KZ 78/140	CMN-D 130 b	3 12 26 0171		10x0.75x65°		
2	KZ 78/155 b	CMN-D 130 d	3 12 26 0173		10x0.80x71°		
2	KZ 78/155	CMN-D 131 K	3 12 26 0179		12x0.70x68°		
2	KZ 78/140	CMN-D 131 i	3 12 26 0178	D152861P	12x0.80x71°		
2	KZ 78/155 F	CMN-D 131 r	3 12 26 0186	X11.22107.0106	10x0.85x71°		
2	KZ 84/160	CMN-D 131 L	3 12 26 0180		12x0.90x70°		
2	KZ 86/160 E	CMN-D 131 m	3 12 26 0181	X11.22107-0012	12x0.92x70°		
2	KZ 93/170	CMN-D 131 n	3 12 26 0182		12x0.95x70°		

Scandic Diesel Services Inc.  
 6360 Notre Dame East  
 Montreal, Quebec  
 H1N 2E1, Canada

Phone +1 514 228 1299  
 Telefax +1 514 256 8237  
 24 hours +1 514 566 1553  
 Email sales@scandiserv.com

[www.scandiserv.com](http://www.scandiserv.com)

Scandic Diesel Services © 2009 - 2011  
 All rights reserved



**MAN**

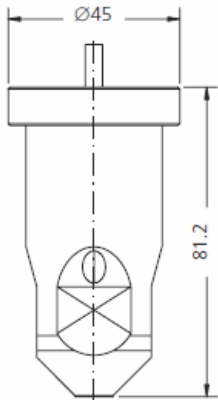


Fig.1

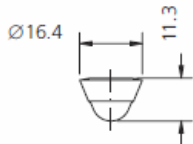


Fig.2

**NOZZLE ELEMENTS SUITABLE TO:**

**MAN**

DRW.	ENGINE TYPE	SDS TYPE	SDS No.	ORIGINAL REFERENCE	SPRAY DATA	PRESS. STAGE	NOTES
*1	KZ 57/80 KZ 60/105	CMN-D 160	3 21 26 0010	X11.22106-0053		10x8.0	
*1	KZ 60/105	CMN-D 161	3 21 26 0011	60.2801.0003		12x10.5	
2	KZ 60/105	CMN-D 165	3 11 26 0005		10x0.69x69°		
2	KZ 60/105	CMN-D 166	3 11 26 0010		10x0.72x67°		
2		CMN-D 167	3 11 26 0015		10x0.72x72°		
2		CMN-D 168	3 11 26 0020		12x0.55x69°		
2		CMN-D 169	3 11 26 0025		10x0.84x89°		
2		CMN-D 170	3 11 26 0026		10x0.55x71°		
2		CMN-D 171	3 11 26 0027		12x0.56x69°		

\* = RAFFREDDATO - COOLED  
 C = CROMATO - CHROMATED

Scandic Diesel Services Inc.  
 6360 Notre Dame East  
 Montreal, Quebec  
 H1N 2E1, Canada

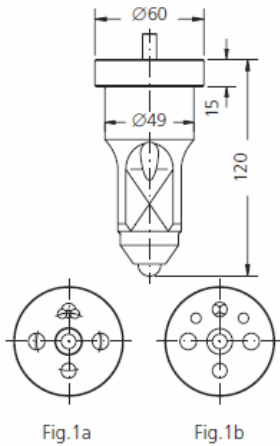
Phone +1 514 228 1299  
 Telefax +1 514 256 8237  
 24 hours +1 514 566 1553  
 Email sales@scandiserv.com

[www.scandiserv.com](http://www.scandiserv.com)

Scandic Diesel Services © 2009 - 2011  
 All rights reserved



**MAN**



NOZZLE ELEMENTS SUITABLE TO:					MAN		
DRW.	ENGINE TYPE	SDS TYPE	SDS No.	ORIGINAL REFERENCE	SPRAY DATA	PRESS. STAGE	NOTES
*1a	KSZ 78/155	CMN-D 172	3 23 26 0005	D.1122107-0142 X.1122107-0147 F.1122106-0074	10x0.90x70°	14x11	
*1a	KSZ 78/155 A	CMN-D 173	3 23 26 0004	D.1122107-0142 X.1122107-0147 F.1122106-0074	10x0.92x69°	14x11	
*1a	KSZ 70/125 A	CMN-D 174	3 23 26 0003	X.1122107-0517	12x0.78x71°	14x11	
*1a	KSZ 70/125 KSZ 70/125 A	CMN-D 175	3 23 26 0002	D.1122107-0142 X.1122107-0146 F.1122106-0074	10x0.82x69°	14x11	
*1b	KSZ 70/125	CMN-D 176	3 23 26 0001	D.1122107-0142 X.1122107-0146 F.1122106-0074	10x0.82x69°	14x11	
*1a		CMN-D 177	3 23 26 0006		10x0.76x78° +5x0.43x60°	14x11	
*1b		CMN-D 188	3 23 26 0019		10x0.76x78° +5x0.43x60°	14x11	
*1a	KSZ 70/125 A	CMN-D 189	3 23 26 0020	X11.22107-0519	12x0.72x71°	14x11	
*1a	KSZ 70/125 KSZ 70/125 A	CMN-D 190	3 23 26 0021	X11.22107-0521	12x0.65x71°	14x11	
*1a	KSZ 78/155 A	CMN-D 191	3 23 26 0022	X11.22107-0636	12x0.84x70°	14x11	

\* = RAFFREDDATO - COOLED  
 C = CROMATO - CHROMATED

Scandic Diesel Services Inc.  
 6360 Notre Dame East  
 Montreal, Quebec  
 H1N 2E1, Canada

Phone +1 514 228 1299  
 Telefax +1 514 256 8237  
 24 hours +1 514 566 1553  
 Email sales@scandiserv.com

[www.scandiserv.com](http://www.scandiserv.com)

Scandic Diesel Services © 2009 - 2011  
 All rights reserved



**MAN**

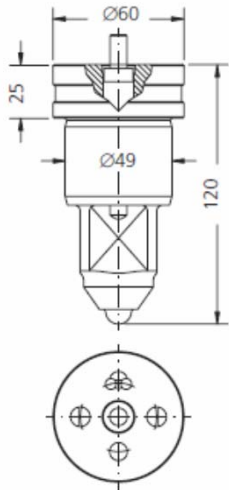


Fig.1

NOZZLE ELEMENTS SUITABLE TO:					MAN		
DRW.	ENGINE TYPE	SDS TYPE	SDS No.	ORIGINAL REFERENCE	SPRAY DATA	PRESS. STAGE	NOTES
*1	KSZ 70/125 B KSZ 70/125 BL	CMN-D 178	3 23 26 0010	E11.22107-0552 X11.22107-0555 E11.22107-0557	10x0.85x75° +5x0.55x60°	14x10.5	
*1	KZ52/105	CMN-D 179	3 23 26 0012		10x0.55x75° +5x0.40x60°	14x10.5	
*1	KSZ 70/125 B	CMN-D 182	3 23 26 0013	E11.22107-0297 X11.22107-0299 X11.22107-0243	10x0.90x69°	14x10.5	
*1	KSZ 70/125 B KSZ 70/125 BL	CMN-D 183	3 23 26 0014	E11.22107-0357 X11.22107-0358 X11.22107-0366	12x0.85x71°	14x10.5	
*1	KSZ 70/125 B KSZ 07/125 BL	CMN-D 184	3 23 26 0015	E11.22107-0529 X11.22107-0530 X11.22107-0533	12x0.75x71°	14x10.5	
*1	KSZ 70/125 B KSZ 07/125 BL	CMN-D 185	3 23 26 0016	E11.22107-0694 X11.22107-0695 E11.22107-0700	10x0.78x75° +5x0.48x60°	14x10.5	
*1	KSZ 70/150 C KSZ 70/150 CL	CMN-D 186	3 23 26 0017	E11.22107-0649 X11.22107-0653 E11.22107-0655	10x0.85x73° +5x0.55x60°	14x10.5	
*1	KSZ 70/150 C	CMN-D 187	3 23 26 0018	E11.22107-0759 X11.22107-0764	10x0.85x77° +5x0.55x62°	14x10.5	

\* = RAFFREDDATO - COOLED  
 C = CROMATO - CHROMATED

Scandic Diesel Services Inc.  
 6360 Notre Dame East  
 Montreal, Quebec  
 H1N 2E1, Canada

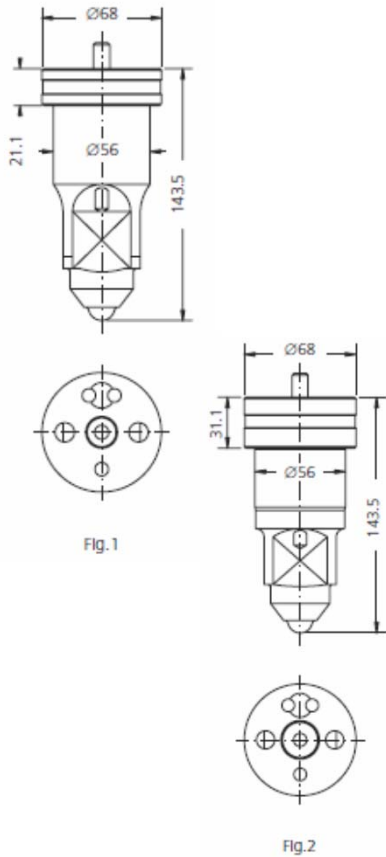
Phone +1 514 228 1299  
 Telefax +1 514 256 8237  
 24 hours +1 514 566 1553  
 Email sales@scandiserv.com

[www.scandiserv.com](http://www.scandiserv.com)

Scandic Diesel Services © 2009 - 2011  
 All rights reserved



**MAN**



NOZZLE ELEMENTS SUITABLE TO:					MAN		
DRW.	ENGINE TYPE	SDS TYPE	SDS No.	ORIGINAL REFERENCE	SPRAY DATA	PRESS. STAGE	NOTES
*1	KSZ 90/160	CMN-D 200	3 55 26 0100	D 11.22107-0129 X 11.22107-0122	12x1x140°	16.5x13	
*1	KSZ 105/180	CMN-D 201	3 55 26 0101		10x1.2x142°	16.5x13	
*1	KSZ 90/160 A	CMN-D 202	3 55 26 0102	D 11.22107-0129 X 11.22107-0241	12x1.0x136°	16.5x13	
*1		CMN-D 203	3 55 26 0103		12x0.85x144°	16.5x13	
*1	KSZ 90/160 A	CMN-D 204	3 55 26 0104	X 11.22107-0626	14x0.80x144°	16.5x13	
*1	KSZ 90/160 A	CMN-D 206	3 55 26 0106	X 11.22107-0484	14x0.92x140°	16.5x13	
*2		CMN-D 220	3 55 26 0120		12x1.00x140°	18x13	
*2		CMN-D 221	3 55 26 0121		10x1.15x140°	18x13	
*2		CMN-D 222	3 55 26 0122		12x1.05x140°	18x13	
*2		CMN-D 223	3 55 26 0123		14x1.05x140°	18x13	
*2		CMN-D 224	3 55 26 0124		12x0.95x144°	18x13	
*2	KSZ 90/160 B	CMN-D 225	3 55 26 0125	E 11.22107-0290 X 11.22107-0571	14x0.95x144°	18x13	
*2		CMN-D 226	3 55 26 0126		12x1.15x140°	18x13	
*2		CMN-D 227	3 55 26 0127		10x1.02x150°+ 5x0.67x120°	18x13	
*2		CMN-D 228	3 55 26 0128		10x1.12x150°+ 5x0.76x120°	18x13	
*2		CMN-D 229	3 55 26 0129		12x0.93x150°+ 6x0.62x120°	18x13	

\* = RAFFREDDATO - COOLED  
 C = CROMATO - CHROMATED

Scandic Diesel Services Inc.  
 6360 Notre Dame East  
 Montreal, Quebec  
 H1N 2E1, Canada

Phone +1 514 228 1299  
 Telefax +1 514 256 8237  
 24 hours +1 514 566 1553  
 Email sales@scandiserv.com

[www.scandiserv.com](http://www.scandiserv.com)

Scandic Diesel Services © 2009 - 2011  
 All rights reserved





**MAN**

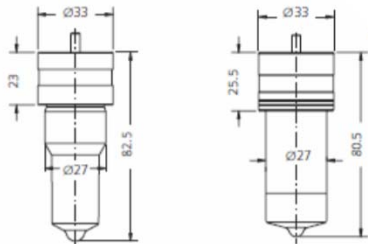


Fig.1

Fig.2

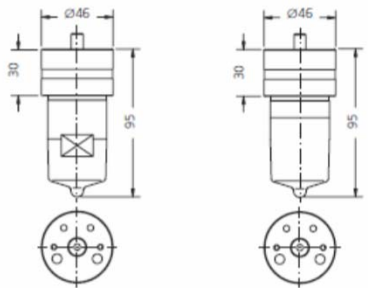


Fig.3

Fig.4

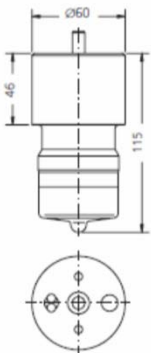


Fig.5

\* = RAFFREDDATO - COOLED  
 C = CROMATO - CHROMATED

NOZZLE ELEMENTS SUITABLE TO:					MAN		
DRW.	ENGINE TYPE	SDS TYPE	SDS No.	ORIGINAL REFERENCE	SPRAY DATA	PRESS. STAGE	NOTES
1	L 27/38	CMN-D 205	3 20 26 0005	11.22107-1482	9x0.45x148°	8x5.3	IMO 1482
*2	25/33	CMN-D 210	3 35 26 0030		10x0.40x160°	8x6.3	
*3	L 40/54	CMN-D 275	3 36 26 0100		7+7x0.55x160°	11x7.3	COOLED
*4	L 40/54	CMN-D 280	3 36 26 0105		7+7x0.58x160°	11x7.3	COOLED
*5	KSZ 52/105	CMN-D 180	3 36 26 0005	E11.22100-0591	10x0.55x150° +5x0.40x120°	14x10	COOLED
*5	KSZ 52/105	CMN-D 181	3 36 26 0006	E11.22100-0591	10x0.55x150° +5x0.38x120°	14x10	COOLED

Scandic Diesel Services Inc.  
 6360 Notre Dame East  
 Montreal, Quebec  
 H1N 2E1, Canada

Phone +1 514 228 1299  
 Telefax +1 514 256 8237  
 24 hours +1 514 566 1553  
 Email sales@scandiserv.com

[www.scandiserv.com](http://www.scandiserv.com)

Scandic Diesel Services © 2009 - 2011  
 All rights reserved