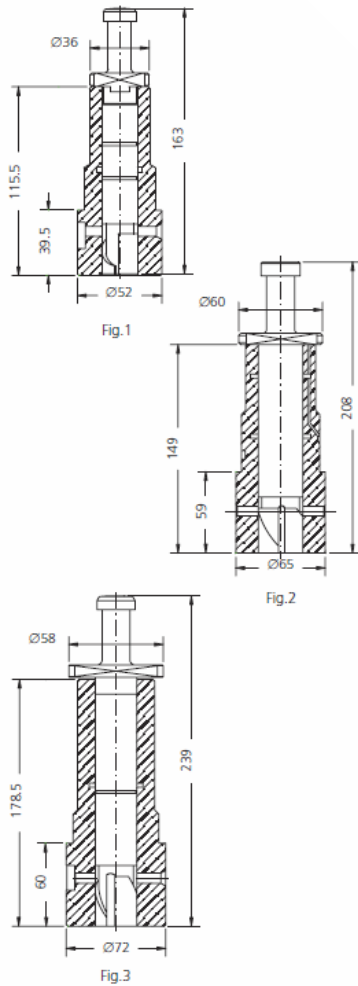




MITSUBISHI



PUMP ELEMENTS SUITABLE TO:					MITSUBISHI		
DRW.	ENGINE TYPE	SDS TYPE	SDS No.	ORIGINAL REFERENCE	TECHNICAL DATA		NOTES
					Ø	HELIX DIRECT.	
1	DM 26	CMI-P 010	1 26 99 0015	22	LH	F 501	
2	UET 37 LA	CMI-P 020	1 26 99 0050	32	LH		
3	UET 45/80	CMI-P 030	1 26 99 0060	30	LH		

Scandic Diesel Services Inc.
 6360 Notre Dame East
 Montreal, Quebec
 H1N 2E1, Canada

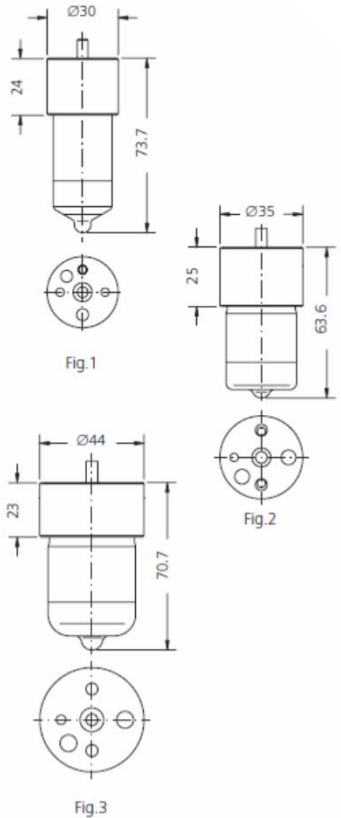
Phone +1 514 228 1299
 Telefax +1 514 256 8237
 24 hours +1 514 566 1553
 Email sales@scandiserv.com

www.scandiserv.com

Scandic Diesel Services © 2009 - 2011
 All rights reserved



MITSUBISHI



NOZZLE ELEMENTS SUITABLE TO:				MITSUBISHI			
DRW.	ENGINE TYPE	SDS TYPE	SDS No.	ORIGINAL REFERENCE	SPRAY DATA	PRESS. STAGE	NOTES
*1	KOBEIKA	CMI-D 010	3 33 99 0005		8x0.40x140°	8x5.5	
*2	UET 45/80	CMI-D 050	3 35 99 0005		10x0.52x140°	8x6.0	
*3	UET 52/105	CMI-D 100	3 35 99 0010	52 DA 0167	10x0.56x140°	10x7.0	
*3	UET 52/105	CMI-D 101	3 35 99 0011		10x0.62x140°	10x7.0	

* = RAFFREDDATO - COOLED
 c = CROMATO - CHROMATED

Scandic Diesel Services Inc.
 6360 Notre Dame East
 Montreal, Quebec
 H1N 2E1, Canada

Phone +1 514 228 1299
 Telefax +1 514 256 8237
 24 hours +1 514 566 1553
 Email sales@scandiserv.com

www.scandiserv.com

Scandic Diesel Services © 2009 - 2011
 All rights reserved



MITSUBISHI

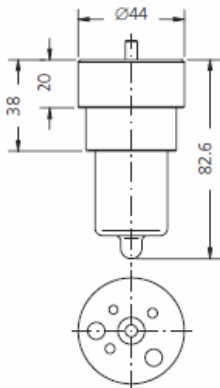


Fig.1

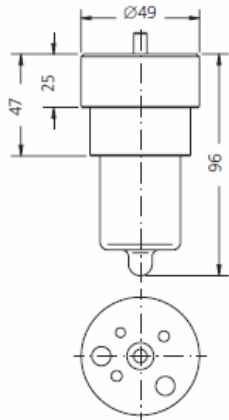


Fig.2

* = RAFFREDDATO - COOLED
 ° = CROMATO - CHROMATED

Scandic Diesel Services Inc.
 6360 Notre Dame East
 Montreal, Quebec
 H1N 2E1, Canada

Phone +1 514 228 1299
 Telefax +1 514 256 8237
 24 hours +1 514 566 1553
 Email sales@scandiserv.com

www.scandiserv.com

Scandic Diesel Services © 2009 - 2011
 All rights reserved

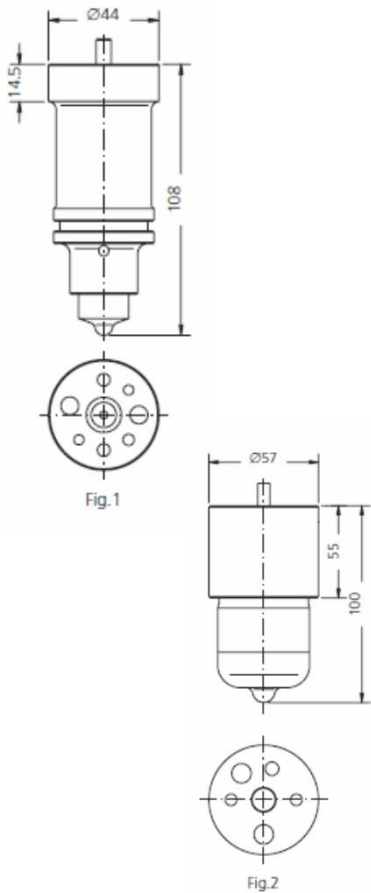
NOZZLE ELEMENTS SUITABLE TO:

MITSUBISHI

DRW.	ENGINE TYPE	SDS TYPE	SDS No.	ORIGINAL REFERENCE	SPRAY DATA	PRESS. STAGE	NOTES
*1	UEC	CMI-D 110	3 36 99 0050	227 058 4N	4x0.49/0.52	8x6.0	
*1	UEC-45 LA	CMI-D 114	3 36 99 0054	232 075 4N	4x0.75/0.77	8x6.0	
*2	UEC-52 LA	CMI-D 134	3 36 99 0056	233 083 4N	4x0.84/0.85	9x6.0	
*2	UEC-52 LA	CMI-D 137	3 36 99 0058	233 4Y 086	4x0.76/0.85	9x6.0	
*2	UEC-52 LA	CMI-D 131	3 36 99 0060	4x0.80	9x6.0		



MITSUBISHI



NOZZLE ELEMENTS SUITABLE TO:					MITSUBISHI		
DRW.	ENGINE TYPE	SDS TYPE	SDS No.	ORIGINAL REFERENCE	SPRAY DATA	PRESS. STAGE	NOTES
*1	UET-45 B	CMI-D 150	3 36 99 0100		10x0.48x140°	10x5.5	
*2		CMI-D 200	3 37 99 0200	60 H 0004	10x0.73x144°+ 5x0.52x80°	12x8.0	
*2		CMI-D 202	3 37 99 0202	60 H	10x0.73x148°+ 5x0.52x80°	12x8.0	

* = RAFFREDDATO - COOLED
 ° = CROMATO - CHROMATED

Scandic Diesel Services Inc.
 6360 Notre Dame East
 Montreal, Quebec
 H1N 2E1, Canada

Phone +1 514 228 1299
 Telefax +1 514 256 8237
 24 hours +1 514 566 1553
 Email sales@scandiserv.com

www.scandiserv.com

Scandic Diesel Services © 2009 - 2011
 All rights reserved