



Scandic Diesel Services Inc.
"It's smooth sailing from here"

NORDBERG

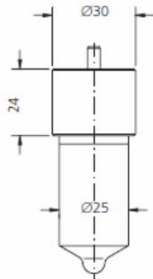


Fig.1

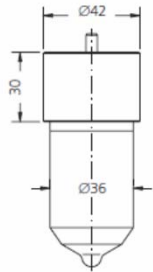


Fig.2

NOZZLE ELEMENTS SUITABLE TO:					NORDBERG		
DRW.	ENGINE TYPE	SDS TYPE	SDS No.	ORIGINAL REFERENCE	SPRAY DATA	PRESS. STAGE	NOTES
1		L 110 U 527-1	3 05 01 0026	ADL 110 U 527-1	9x0.45x110°	8x5.5	
1		L 110 U 599	3 05 01 0035	ADL 110 U 599	9x0.45x110°	8x5.5	
2	TS 21	L 125 V 639	3 06 01 0019	ADL 125 V 639	9x0.50x125°	10x7.0	
2		L 110 VM 659	3 06 01 0015	ADL 110 VM 659	9x0.575x110°	11x7.0	
2	TS 2112	L 125 VM 659	3 06 01 0017	ADL 125 VM 659	9x0.575x125°	11x7.0	
1	FS 13	L 155 U 1118	3 05 02 0158	DL 155 U 1118	9x0.53x155°	8x5.0	
2		L 110 V 969	3 06 02 0015	DL 110 V 969	9x0.575x110°	11x7.0	
2	TS 2112	L 125 V 969	3 06 02 0025	DL 125 V 969	9x0.575x125°	11x7.0	

Scandic Diesel Services Inc.
 6360 Notre Dame East
 Montreal, Quebec
 H1N 2E1, Canada

Phone +1 514 228 1299
 Telefax +1 514 256 8237
 24 hours +1 514 566 1553
 Email sales@scandiserv.com

www.scandiserv.com

Scandic Diesel Services © 2009 - 2011
 All rights reserved