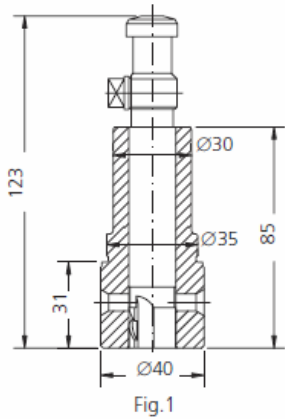




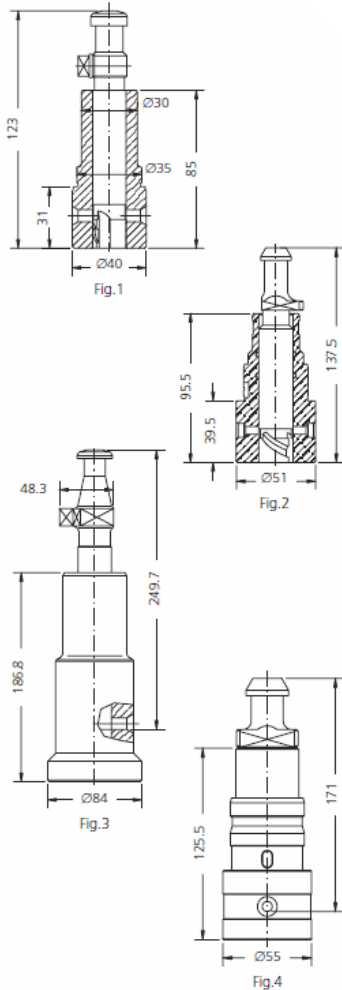
RUSTON



PUMP ELEMENTS SUITABLE TO:					RUSTON		
DRW.	ENGINE TYPE	SDS TYPE	SDS No.	ORIGINAL REFERENCE	TECHNICAL DATA		NOTES
					Ø	HELIX DIRECT.	
1	CSV, CSRK CSV D, CSRK D	CBR-P 102	1 14 03 0010	6/110 E	20	LH	ABOVE 750 rpm
1	CSVM, CSRKM CSV T, CSRK T	CBR-P 102	1 14 03 0010	6/110 E	20	LH	ABOVE 750 rpm
1	CSV, CSRK CSV D, CSRK D	CBR-P 100	1 14 03 0005	6/110 C	18	LH	BELOW 750 rpm
1	CSVM, CSRKM	CBR-P 100	1 14 03 0005	6/110 C	18	LH	BELOW 750 rpm
1	SVA, SRKA SVAM, SRKM	CBR-P 102	1 14 03 0010	6/110 E	20	LH	ABOVE 750 rpm
1	SVT, SRKT	CBR-P 102	1 14 03 0010	6/110 E	20	LH	ABOVE 750 rpm
1	SV, SRK SVA, SRKA	CBR-P 097	1 14 03 0002	6/110 A	16	LH	BELOW 750 rpm
1	SVM, SRKM SVAM, SRKAM	CBR-P 100	1 14 03 0005	6/110 C	18	LH	BELOW 750 rpm
1	RK, MK III	CBR-P 102	1 14 03 0010	6/110 E	20	LH	
1	RK, MK III	CBR-P 102	1 14 03 0010	6/110 E	20	LH	SHEATHED H.P. PIPE
1	SVD, SRK D	CBR-P 100	1 14 03 0005	6/110 C	18	LH	BEFORE 1964



RUSTON



PUMP ELEMENTS SUITABLE TO:					RUSTON		NOTES
DRW.	ENGINE TYPE	SDS TYPE	SDS No.	ORIGINAL REFERENCE	TECHNICAL DATA		
					Ø	HELIX DIRECT.	
1	4 A P 230	CBR-P 106	1 14 03 0056	6/441 E	20	RH	
2	6 A P 230	CBR-P 188	1 14 03 0018	36/74 F	22	RH	
2	RKC	CBR-P 196	1 14 03 0021	36/78 F	22	LH	
2		CBR-P 214	1 14 03 0036	36/215 F	22	LH	
3	VULCAN	CBR-P 300	1 17 03 0005	32/92 D	30	LH	
4	RK 270 MK II	CBR-P 225	1 42 03 0025	37/103 G	24	LH	

Scandic Diesel Services Inc.
 6360 Notre Dame East
 Montreal, Quebec
 H1N 2E1, Canada

Phone +1 514 228 1299
 Telefax +1 514 256 8237
 24 hours +1 514 566 1553
 Email sales@scandiserv.com

www.scandiserv.com

Scandic Diesel Services © 2009 - 2011
 All rights reserved



RUSTON

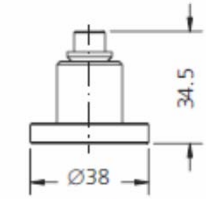


Fig.1

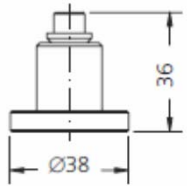


Fig.2

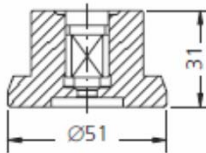


Fig.3

DELIVERY VALVES SUITABLE TO:					RUSTON	
DRW.	ENGINE TYPE	SDS TYPE	SDS No.	ORIGINAL REFERENCE	TECHNICAL DATA	NOTES
					Ø	
1	CSV, CSRK CSVD, CSRKD	CBR-V 050	2 15 03 0010	6/129	12	ABOVE 750 rpm
1	CSVM, CSRKM CSVT, CSRKT	CBR-V 050	2 15 03 0010	6/129	12	ABOVE 750 rpm
1	CSV, CSRK CSVD, CSRKD	CBR-V 050	2 15 03 0010	6/129	12	BELOW 750 rpm
1	CSVM, CSRKM	CBR-V 050	2 15 03 0010	6/129	12	BELOW 750 rpm
1	SVA,SRKA SVAM, SRKAM	CBR-V 050	2 15 03 0010	6/129	12	ABOVE 750 rpm
1	SVT, SRKT	CBR-V 050	2 15 03 0010	6/129	12	ABOVE 750 rpm
2	SV, SRK SVA, SRKA	CBR-V 070	2 26 03 0005	21/125 B	10	BELOW 750 rpm
1	SVM, SRKM SVAM, SRKAM	CBR-V 050	2 15 03 0010	6/129	12	BELOW 750 rpm
1	RK MK III	CBR-V 050	2 15 03 0010	6/129	12	SHEATHED H.P. PIPE
1	4 A P 230	CBR-V 050	2 15 03 0010	6/129	12	
3	6 A P 230	CBR-V 116	2 26 03 0041	36/54 H	14	
3	RKC	CBR-V 116	2 26 03 0041	36/54 H	14	
1	CSV, CSRK, CSVM CSVD, CSRKD, MKIII	CBR-V 048	2 15 03 0008	6/118	12	



RUSTON

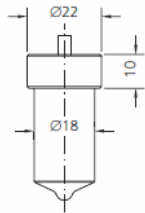


Fig.1

NOZZLE ELEMENTS SUITABLE TO:					RUSTON		
DRW.	ENGINE TYPE	SDS TYPE	SDS No.	ORIGINAL REFERENCE	SPRAY DATA	PRESS. STAGE	NOTES
1	CSV, CSRK CSVD, CSRKD	L 140 T 43 F 529	3 04 03 0340	H 140 T 43 F 529	6x0.43x140°	8x5.0	ABOVE 750 rpm
1	CSVM, CSRKM CSVT, CSRKT	L 140 T 43 F 529	3 04 03 0340	H 140 T 43 F 529	6x0.43x140°	8x5.0	ABOVE 750 rpm
1	CSV, CSRK CSVM, CSRKM	L 140 T 43 F 529	3 04 03 0340	H 140 T 43 F 529	6x0.43x140°	8x5.0	BELOW 750 rpm
1	CSVD, CSRKD	L 140 T 35 H 528	3 04 03 0335	H 140 T 35 H 528	8x0.35x140°	8x5.0	BELOW 750 rpm
1	SVA, SRKA	L 140 T 43 F 529	3 04 03 0340	H 140 T 43 F 529	6x0.43x140°	8x5.0	ABOVE 750 rpm
1	SVAM, SRKAM SVT, SRKT	L 140 T 35 H 528	3 04 03 0335	H 140 T 35 H 528	8x0.35x140°	8x5.0	ABOVE 750 rpm
1	SV, SRK, SVA, SRKA	L 140 T 35 H 528	3 04 03 0335	H 140 T 35 H 528	8x0.35x140°	8x5.0	BELOW 750 rpm
1	SVM, SRKM SVAM, SRKAM	L 140 T 35 H 528	3 04 03 0335	H 140 T 35 H 528	8x0.35x140°	8x5.0	BELOW 750 rpm
1	SRKD	L 140 T 35 H 528	3 04 03 0335	H 140 T 35 H 528	8x0.35x140°	8x5.0	
1	SVD, SRKD	L 140 T 43 F 529	3 04 03 0340	H 140 T 43 F 529	6x0.43x140°	8x5.0	BEFORE 1964
1	K, SK	L 150 T 29 HP 4	3 04 03 0350	H 150 T 29 HP 4	8x0.29x150°	6x3.5	BEFORE 1964
1	VM, RKM	L 140 T 35 H 528	3 04 03 0335	H 140 T 35 H 528	8x0.35x140°	8x5.0	
1	VCBY	L 150 T 25 L 530 P 3	3 04 03 0347	H 150 T 25 L 530 P 3	10x0.25x150°	8x5.0	

Scandic Diesel Services Inc.
 6360 Notre Dame East
 Montreal, Quebec
 H1N 2E1, Canada

Phone +1 514 228 1299
 Telefax +1 514 256 8237
 24 hours +1 514 566 1553
 Email sales@scandiserv.com

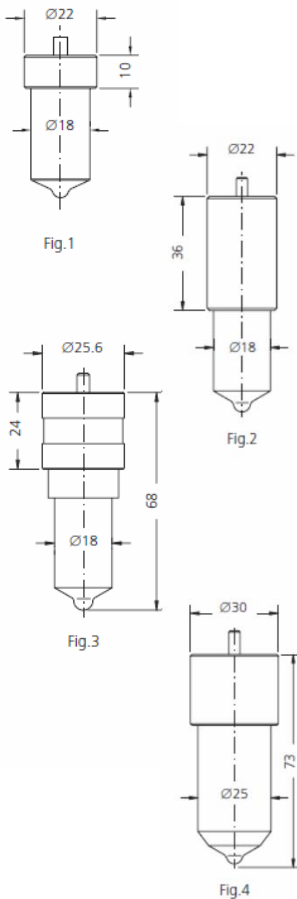
www.scandiserv.com

Scandic Diesel Services © 2009 - 2011
 All rights reserved



Scandic Diesel Services Inc.
"It's smooth sailing from here"

RUSTON



NOZZLE ELEMENTS SUITABLE TO:					RUSTON		
DRW.	ENGINE TYPE	SDS TYPE	SDS No.	ORIGINAL REFERENCE	SPRAY DATA	PRESS. STAGE	NOTES
1	RK MK III	L 140 T 43 F 529	3 04 03 0340	H 140 T 43 F 529	6x0.43x140°	8x5.0	
1	RK MK III	L 140 T 43 F 529	3 04 03 0340	H 140 T 43 F 529	6x0.43x140°	8x5.0	SHEATHED H.P. PIPE DUAL FUEL
2	RKC, RK 270 1 ^a	LL 145 T 45 H 775 P 5	3 06 03 0038	HL 145 T 45 H 775 P 5	8x0.45x145°	7x4.5	
2	RKC, RK 270 2 ^a	LL 145 T 50 H 863 P 5	3 06 03 0041	HL 145 T 50 H 863 P 5	8x0.50x145°	7x4.5	
2	RK 270	LL 155 T 46 K 879 P 4	3 06 03 0069	HL 155 T 46 K 879 P 4	9x0.45x160°	7x4.5	
2	4 A P 230	LL 145 T 35 H 775 P 4	3 06 03 0034	HL 145 T 35 H 775 P 4	8x0.35x145°	7x4.5	
2	6 A P 230	LL 145 T 45 H 775 P 5	3 06 03 0038	HL 145 T 45 H 775 P 5	8x0.45x145°	7x4.5	
3	RH 270 - MK II	LL 145 T 50 H 897 P 4	3 06 03 0150	HL 145 T 50 H 897 P 4	8x0.50x145°	7x4.5	
4	RL MK II	L 150 U 45 L 607	3 05 03 0080	H 150 U 45 L 607	10x0.45x150°	10x5.5	BEFORE 1964

Scandic Diesel Services Inc.
 6360 Notre Dame East
 Montreal, Quebec
 H1N 2E1, Canada

Phone +1 514 228 1299
 Telefax +1 514 256 8237
 24 hours +1 514 566 1553
 Email sales@scandiserv.com

www.scandiserv.com

Scandic Diesel Services © 2009 - 2011
 All rights reserved



RUSTON

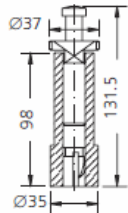


Fig.1

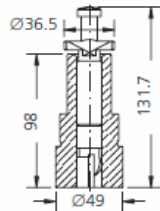


Fig.2

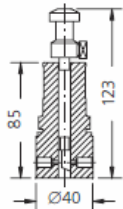


Fig.3

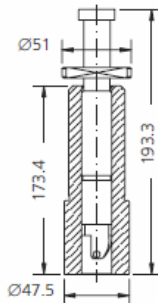


Fig.4

PUMP ELEMENTS SUITABLE TO:

RUSTON

DRW.	ENGINE TYPE	SDS TYPE	SDS No.	ORIGINAL REFERENCE	TECHNICAL DATA		NOTES
					Ø	HELIX DIRECT.	
1		CRH-P 020	1 12 12 0005	FVCB/B 20010	12	RH	
		CRH-P 021	1 12 12 0008	FVCBX/B 20010	14	RH	
		CRH-P 022	1 12 12 0010	FPC-1600A	16	RH	
		CRH-P 023	1 12 12 0011	FVEB/B 20010	16	RH	
		CRH-P 024	1 12 12 0015	FPC 1600 B	16	LH	
		CRH-P 025	1 12 12 0020	FVBX-1800	18	RH	
2		CRH-P 026	1 12 12 0021	FVEBX/B 20010	18	RH	
		CRH-P 035	1 14 12 0005	FAPC-20010	18	RH	
3		CRH-P 036	1 14 12 0010	FAR-20010A	20	RH	
		CRH-P 040	1 14 12 0020	FCCAB 80	8	LH	
4		CRH-P 050	1 16 12 0005	FPC-2000A	20	RH	
		CRH-P 051	1 16 12 0010	FVGBX/B 20010	22	RH	



Scandic Diesel Services Inc.
"It's smooth sailing from here"

RUSTON

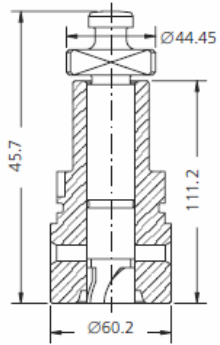


Fig.1

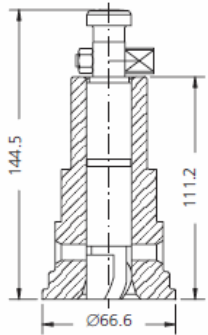


Fig.2

PUMP ELEMENTS SUITABLE TO:					RUSTON		
DRW.	ENGINE TYPE	SDS TYPE	SDS No.	ORIGINAL REFERENCE	TECHNICAL DATA		NOTES
					Ø	HELIX DIRECT.	
1		CRH-P 060	1 24 12 0100	F.A2T-20010	24	RH	
2		CRH-P 065	1 24 12 0105	FATC/B-20050	22.5	RH	

Scandic Diesel Services Inc.
 6360 Notre Dame East
 Montreal, Quebec
 H1N 2E1, Canada

Phone +1 514 228 1299
 Telefax +1 514 256 8237
 24 hours +1 514 566 1553
 Email sales@scandiserv.com

www.scandiserv.com

Scandic Diesel Services © 2009 - 2011
 All rights reserved



Scandic Diesel Services Inc.
"It's smooth sailing from here"

RUSTON

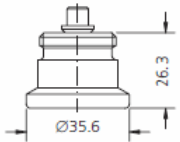


Fig.1

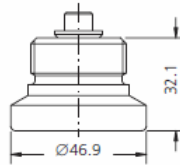


Fig.2

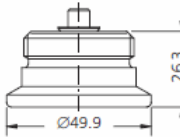


Fig.3

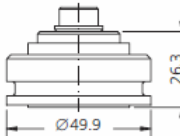


Fig.4

Scandic Diesel Services Inc.
 6360 Notre Dame East
 Montreal, Quebec
 H1N 2E1, Canada

Phone +1 514 228 1299
 Telefax +1 514 256 8237
 24 hours +1 514 566 1553
 Email sales@scandiserv.com

www.scandiserv.com

Scandic Diesel Services © 2009 - 2011
 All rights reserved

DELIVERY VALVES SUITABLE TO:					RUSTON	
DRW.	ENGINE TYPE	SDS TYPE	SDS No.	ORIGINAL REFERENCE	TECHNICAL DATA	NOTES
					∅	
1		CRH-V 005	2 08 12 0005	FVCB-20020	8	
1		CRH-V 006	2 24 12 0020	FVCBX-20020A	11	
2		CRH-V 010	2 24 12 0005	FPC-20020	12.7	
3		CRH-V 015	2 24 12 0015	FAPC-20020	11	
4		CRH-V 020	2 24 12 0040	FAR-20060A	13.5	



RUSTON

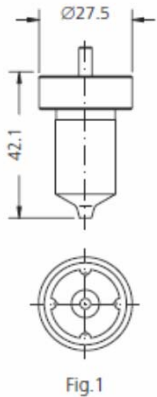


Fig.1

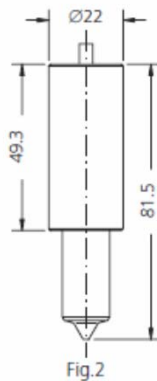


Fig.2

NOZZLE ELEMENTS SUITABLE TO:					RUSTON		
DRW.	ENGINE TYPE	SDS TYPE	SDS No.	ORIGINAL REFERENCE	SPRAY DATA	PRESS. STAGE	NOTES
1	AR-ARM	CRH-D 010	3 24 12 0148	FAR-23030	10x0.355x160°	8x4.90	
1	APC	CRH-D 011	3 24 12 0150	FAPC/B-23030A	10x0.305x150°	8x4.90	
1	APC	CRH-D 012	3 24 12 0155	FAPC/B-23060A	8x0.36x150°	8x4.90	
2	VCB	CRH-D 020	3 24 12 0100	FVCB/B-23030	8x0.30x140°	8x5.55	
2	VEB	CRH-D 021	3 24 12 0103	FVEB-23030	8x0.41x155°	8x5.55	
2		CRH-D 022	3 24 12 0105	FVEB/B-23030	8x0.34x140°	8x5.55	
2	VEBX	CRH-D 023	3 24 12 0115	FVEBX/B-23030	8x0.41x130°	8x5.55	
2		CRH-D 024	3 24 12 0116	FVCB/B-23030A	8x0.41x130°	8x5.55	
2		CRH-D 025	3 24 12 0117	FYH/B-23030	6x0.35x160°	8x5.55	
2		CRH-D 026	3 24 12 0120	FYHX/B-23030	5x0.43x160°	8x5.55	
2		CRH-D 027	3 24 12 0118	FYM-23030	5x0.50x150°	8x5.55	
2	YMC	CRH-D 028	3 24 12 0119	FYMC-23030	5x0.55x150°	8x5.55	
2	CRH-D 030	3 24 12 0122	FYLX	5x0.59x150°	8x5.55		



RUSTON

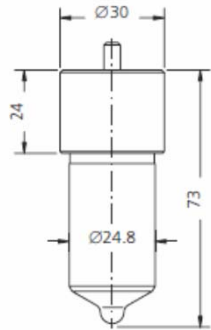


Fig.1

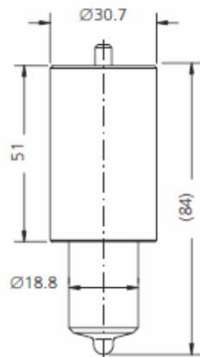


Fig.2

NOZZLE ELEMENTS SUITABLE TO:				RUSTON			
DRW.	ENGINE TYPE	SDS TYPE	SDS No.	ORIGINAL REFERENCE	SPRAY DATA	PRESS. STAGE	NOTES
1	ATC MK1	CRH-D 040	3 24 12 0250	F65-00251B	10x0.46x150°	10.3x6.15	
2		CRH-D 060	3 24 12 0130	FVGB/B-23030	8x0.34x140°	9.5x5.50	
2		CRH-D 061	3 24 12 0135	FVGBX/B-23030	8x0.49x130°	9.5x5.50	
2		CRH-D 063	3 24 12 0140	FVOX/B-23030	7x0.65x140°	9.5x5.50	