



Scandic Diesel Services Inc.
"It's smooth sailing from here"

SEMT PIELSTICK

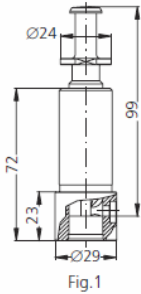


Fig.1

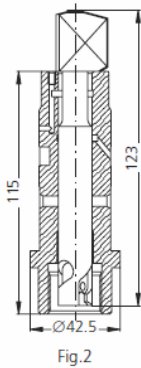


Fig.2

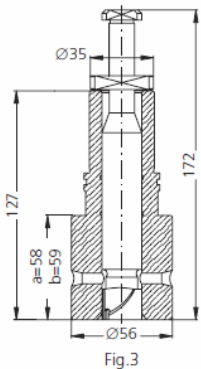


Fig.3

PUMP ELEMENTS SUITABLE TO:

SEMT PIELSTICK

DRW.	ENGINE TYPE	SDS TYPE	SDS No.	ORIGINAL REFERENCE	TECHNICAL DATA		NOTES
					Ø	HELIX DIRECT.	
1	16 PA 4 V 185	CRB-P 688	1 12 02 0230	3 418 489 010	16	RH	74.424.8011.01
2	PA 4 V 200 DI/SM	CSP-P 005 H	1 26 29 0010		16	RH	
2	PA 4 V 200 DI/SM	CSP-P 006 H	1 26 29 0011		16	LH	
2	PA 4 V 200 VG/DS	CSP-P 010 H	1 26 29 0015		18	RH	
2	PA 4 V 200 VG/DS	CSP-P 011 H	1 26 29 0016		18	LH	
3a	PA 6 V 280	CSP-P 030 H	1 26 29 0030	26 424 0017	22	RH	314099-510464
3b	PA 6 V 280	CSP-P 032	1 26 29 0032	313 190	25	RH	316311-214204

Scandic Diesel Services Inc.
 6360 Notre Dame East
 Montreal, Quebec
 H1N 2E1, Canada

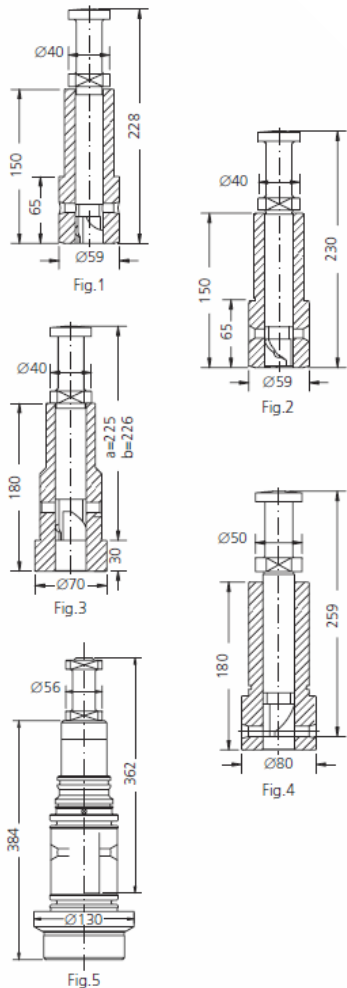
Phone +1 514 228 1299
 Telefax +1 514 256 8237
 24 hours +1 514 566 1553
 Email sales@scandiserv.com

www.scandiserv.com

Scandic Diesel Services © 2009 - 2011
 All rights reserved



SEMT PIELSTICK



PUMP ELEMENTS SUITABLE TO:					SEMT PIELSTICK		
DRW.	ENGINE TYPE	SDS TYPE	SDS No.	ORIGINAL REFERENCE	TECHNICAL DATA		NOTES
					Ø	HELIX DIRECT.	
1	PC 2 - PC 2-2 PC 2-3 DF	CSP-P 035 H	1 26 29 0040	01.030.0015.00 02.030.0019.00	27	LH	WITHOUT AUTOADVANCE
1	PC 2 - PC 2-2 PC 2-3 DF	CSP-P 036 H	1 26 29 0041	01.030.0015.00 02.030.0018.00	27	LH	WITH AUTOADVANCE
2	PC 2-2	CSP-P 040 H	1 26 29 0045	02.430.0033.00	27	LH	317719
3a	PC 2-5 PC 2-5 DF	CSP-P 045 H	1 26 29 0050	02.030.0112.00 02.030.0119.00	30	LH	311121-310479
3b	PC 2-5 BTC	CSP-P 050	1 26 29 0055	02.030.0072.00 02.030.0073.00	33	LH	314163-314209
4	PC 3-480	CSP-P 070	1 74 29 0070	03.030.0060.00 03.030.0119.00	34	RH	307729-310459
5	PC 4	CSP-P 100	1 76 29 0100		47	LH	211-220265 221-220264

Scandic Diesel Services Inc.
 6360 Notre Dame East
 Montreal, Quebec
 H1N 2E1, Canada

Phone +1 514 228 1299
 Telefax +1 514 256 8237
 24 hours +1 514 566 1553
 Email sales@scandiserv.com

www.scandiserv.com

Scandic Diesel Services © 2009 - 2011
 All rights reserved



SEMT PIELSTICK

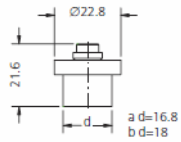


Fig.1

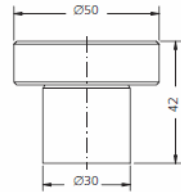


Fig.2

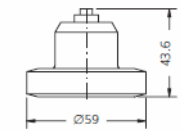


Fig.3

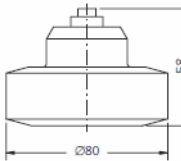


Fig.4

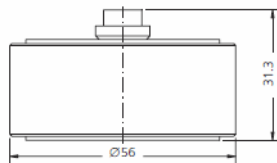


Fig.5

Scandic Diesel Services Inc.
 6360 Notre Dame East
 Montreal, Quebec
 H1N 2E1, Canada

Phone +1 514 228 1299
 Telefax +1 514 256 8237
 24 hours +1 514 566 1553
 Email sales@scandiserv.com

DELIVERY VALVES SUITABLE TO:				SEMT PIELSTICK		
DRW.	ENGINE TYPE	SDS TYPE	SDS No.	ORIGINAL REFERENCE	TECHNICAL DATA	NOTES
					∅	
1a	PA 4 V 185 DF PA 4 V 200 DI/DF PA 4 V 200 VG	CSP-V 005	2 08 29 0005	8	d=16.8	
1b	PA 4 V 200 VGDS	CSP-V 006	2 08 29 0006	8	d=18.0	
2	PC 2-5/PC 2-5 DF	CSP-V 015	2 13 29 0005	02.030.0005.03 02.030.0152.00	13	428042/3 422418/1
5	PA 6	CSP-V 017	2 17 29 0005	02.030.0005.27	10	
3	PC 2-2/PC2-3 DF	CSP-V 020	2 12 29 0005	01.030.0005.00 01.030.0112.00	12	411365/3 415548/3
4	PC 3-480	CSP-V 030	2 16 29 0005	03.030.0115.00	16	

www.scandiserv.com

Scandic Diesel Services © 2009 - 2011
 All rights reserved



SEMT PIELSTICK

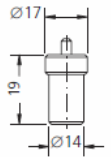


Fig.1

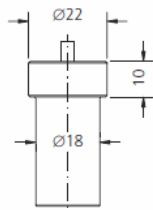


Fig.2

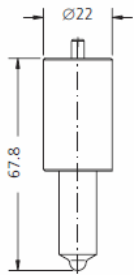


Fig.3

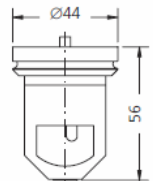


Fig.4

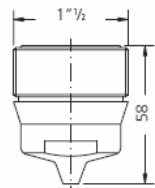


Fig.5

* = RAFFREDDATO - COOLED
 C = CROMATO - CHROMATED

NOZZLE ELEMENTS SUITABLE TO:

SEMT PIELSTICK

DRW.	ENGINE TYPE	SDS TYPE	SDS No.	ORIGINAL REFERENCE	SPRAY DATA	PRESS. STAGE	NOTES
1	PA 4 V 185	N 6 S 197	3 01 02 0154	24.420.0066.00	1x2.0	6x3.5	DN6S197
2	PA 4 V 200	N 12 T 433024	3 04 29 0001	25.420.0014.00	1x2.5	7x4.7	433024
3 ^C	PA 4 V 200	CSP-D 020 H	3 14 29 0005	44.020.0004.00	8x0.40x140°	8x4.8	23.420.0252.00
*4	PC 2	CMN-D 037	3 16 26 0025	02.016.0110.00 02.016.0111.00		10x8.0	307614/1
5	PC 2	CSP-D 005	3 17 29 0005	02.016.0055.0	10x0.55x140°	307626A	
5	PC 2	CSP-D 006	3 17 29 0006	02.016.0060.0	10x0.60x140°		300083

Scandic Diesel Services Inc.
 6360 Notre Dame East
 Montreal, Quebec
 H1N 2E1, Canada

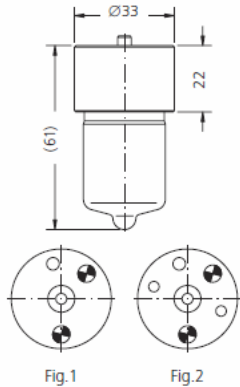
Phone +1 514 228 1299
 Telefax +1 514 256 8237
 24 hours +1 514 566 1553
 Email sales@scandiserv.com

www.scandiserv.com

Scandic Diesel Services © 2009 - 2011
 All rights reserved



SEMT PIELSTICK



NOZZLE ELEMENTS SUITABLE TO:				SEMT PIELSTICK			
DRW.	ENGINE TYPE	SDS TYPE	SDS No.	ORIGINAL REFERENCE	SPRAY DATA	PRESS. STAGE	NOTES
1 ^c	PA 6 V 280	CSP-D 030	3 20 29 0005	26 420 0021.00	8x0.60x140°	8x5.0	426021/5
1 ^c	PA 6 V 280	CSP-D 031	3 20 29 0006	26 420 0019.00	8x0.55x140°	8x5.0	432461/2
1 ^c	PA 6 V 280	CSP-D 032	3 20 29 0007	26 420 0022.00	8x0.65x140°	8x5.0	437023
1 ^c	PA 6 V 280	CSP-D 033	3 20 29 0008	26 420 0024.00	8x0.55x140°	8x5.0	438940/1
1 ^c	PA 6 V 280	CSP-D 034	3 20 29 0009	26 420 0035.00	9x0.50x140°	8x5.0	315765/2
1 ^c	PA 6 V 280	CSP-D 035 H	3 20 29 0010	26 420 0036.00	9x0.50x140°	8x5.0	315766/1
1 ^c	PA 6 V 280	CSP-D 040	3 20 29 0015	26 020 8030.57	9x0.52x140°	8x5.0	1 BL IMO 5501
1 ^c	PA 6 V 280	CSP-D 050	3 20 29 0025	26 420 0048.00	9x0.50x140°	8x5.0	447564/2
1 ^c	PA 6 V 280 BTC	CSP-D 051	3 20 29 0026	26 420 0050.00	9x0.60x135°	8x5.0	449595
*2 ^c	PA 6 V 280 H.F.	CSP-D 061	3 35 29 0061	26 420 0025.00	8x0.55x140°	8x5.0	438941/1

* = RAFFREDDATO - COOLED
^c = CROMATO - CHROMATED

Scandic Diesel Services Inc.
 6360 Notre Dame East
 Montreal, Quebec
 H1N 2E1, Canada

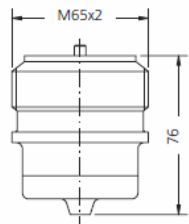
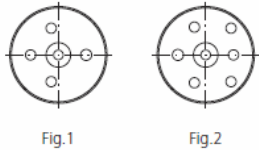
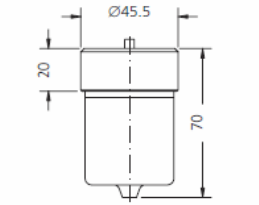
Phone +1 514 228 1299
 Telefax +1 514 256 8237
 24 hours +1 514 566 1553
 Email sales@scandiserv.com

www.scandiserv.com

Scandic Diesel Services © 2009 - 2011
 All rights reserved



SEMT PIELSTICK



NOZZLE ELEMENTS SUITABLE TO:				SEMT PIELSTICK			
DRW.	ENGINE TYPE	SDS TYPE	SDS No.	ORIGINAL REFERENCE	SPRAY DATA	PRESS. STAGE	NOTES
*1	PC 2-2	CSP-D 080	3 22 29 0005	02.416.8160.00 02.016.0009.00	10x0.60x140°	10x7.5	
*1		CSP-D 081	3 22 29 0006	02.416.8155.00 02.016.0009.00	10x0.55x140°	10x7.5	
*1		CSP-D 082	3 22 29 0007	02.416.8165.00 02.016.0009.00	10x0.65x140°	10x7.5	
*1	PC 2-5	CSP-D 080	3 22 29 0005	02.416.8160.00 02.016.0009.00	10x0.60x140°	10x7.5	
*1		CSP-D 082	3 22 29 0007	02.416.8165.00 02.016.0009.00	10x0.65x140°	10x7.5	
*1		CSP-D 084	3 22 29 0009	02.416.8250.00 02.016.0009.00	10x0.52x140°	10x7.5	424777/3
*1		CSP-D 090	3 22 29 0015	02.416.0132.00 02.016.0009.00	10x0.625x140°	10x7.5	
*1	PC 2-6	CSP-D 080	3 22 29 0005	02.416.8160.00 02.016.0009.00	10x0.60x140°	10x7.5	
*1		CSP-D 082	3 22 29 0007	02.416.8165.00 02.016.0009.00	10x0.65x140°	10x7.5	
*2		CSP-D 100	3 22 29 0030	02.016.8001.00 02.016.0009.00	9x0.68x140°	10x7.5	216366/3
*2		CSP-D 102	3 22 29 0032	02.016.8002.00 02.016.0009.00	9x0.63x140°	10x7.5	216427/3
*1	PC 2-3 DF, 5 LCV	CSP-D 081	3 22 29 0006	02.416.8155.00 02.016.0009.00	10x0.55x140°	10x7.5	
*2	PC 20	CSP-D 104	3 22 29 0034	02.016.0009.00	9x0.72x140°	10x7.5	260786/0
*3	PC 3-480	CSP-D 110	3 23 29 0010	03.416.0026.00 03.016.0027.00	10x0.70x144°	12x8.8	213176/3
		CSP-D 111	3 23 29 0011	03.416.0027.00	10x0.70x140°	12x8.8	

* = RAFFREDDATO - COOLED
 C = CROMATO - CHROMATED

Scandic Diesel Services Inc.
 6360 Notre Dame East
 Montreal, Quebec
 H1N 2E1, Canada

Phone +1 514 228 1299
 Telefax +1 514 256 8237
 24 hours +1 514 566 1553
 Email sales@scandiserv.com

www.scandiserv.com

Scandic Diesel Services © 2009 - 2011
 All rights reserved