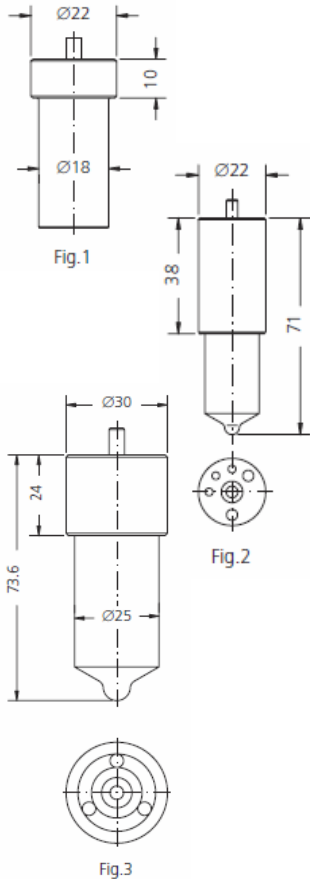




SMIT & BOLNES



NOZZLE ELEMENTS SUITABLE TO:				SMIT & BOLNES			
DRW.	ENGINE TYPE	SDS TYPE	SDS No.	ORIGINAL REFERENCE	SPRAY DATA	PRESS. STAGE	NOTES
1	L-SERIE	L 0 T 258	3 04 02 0405	DL 0 T 258	1x0.55	6x3.0	
1	SB-SB 300 D	L 0 T 993	3 04 02 0630	DL 0 T 993	1x1.0	6x3.0	
1	DL - KL - 5 NL	L 0 T 1037	3 04 02 0649	DL 0 T 1037	1x0.62	6x3.0	
1	7 DNL - 6 DNL	L 0 T 1109	3 04 02 0730	DL 0 T 1109	1x0.63	6x3.0	
1	DNL 150/600	L 0 T 1181	3 04 02 0800	DL 0 T 1181	1x0.72	7x4.5	
1	V 300 D	L 0 T 993	3 04 02 0630	DL 0 T 993	1x1.0	6x3.0	
*2	ST 23 HH	LF 145 T 21	3 30 02 0021	DLF 145 T 21	8x0.34x145°	6x3.0	HEAVY FUEL
1	190 NDL 170/600	L 0 T 60 A 823 P 8	3 04 03 0212	H 0 T 60 A 823 P 8	1x0.60	7x4.5	
3	300 HDK	L 0 U 100 A 353 P 7	3 05 03 0000	H 0 U 100 A 353 P 7	1x1.0	8x5.0	
3	300 HDK	L 0 U 110 A 353 P 7	3 05 03 0001	H 0 U 110 A 353 P 7	1x1.1	8x5.0	UPRATED
3	300 HDK REVERSING	L 0 U 120 A 353 P 7	3 05 03 0003	H 0 U 120 A 353 P 7	1x1.2	8x5.0	UPRATED 425 rpm

* = RAFFREDDATO - COOLED
 † = CROMATO - CHROMATED

Scandic Diesel Services Inc.
 6360 Notre Dame East
 Montreal, Quebec
 H1N 2E1, Canada

Phone +1 514 228 1299
 Telefax +1 514 256 8237
 24 hours +1 514 566 1553
 Email sales@scandiserv.com

www.scandiserv.com

Scandic Diesel Services © 2009 - 2011
 All rights reserved