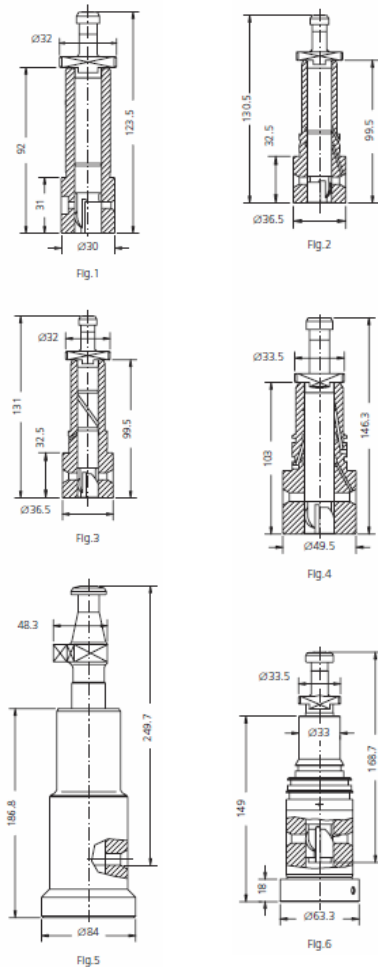




Scandic Diesel Services Inc.
"It's smooth sailing from here"

STORK WERKSPoor DIESEL S.W.D.



PUMP ELEMENTS SUITABLE TO:				STORK WERKSPoor DIESEL S.W.D.			
DRW.	ENGINE TYPE	SDS TYPE	SDS No.	ORIGINAL REFERENCE	TECHNICAL DATA		NOTES
					Ø	HELIX DIRECT.	
1	BR-RH 210	CRB-P 023	1 12 02 0115	1 418 390 007	13	LH	PPK 610 P 4 Z
1	BR-RH 210	CRB-P 025	1 12 02 0125	1 418 390 009	15	LH	PPK 610 P 6 Z
2	F 156-240/241	CRB-P 093	1 14 02 0102	2 418 490 010	17	RH	
3	FPHD 240	CRB-P080	1 14 02 0131	2 418 390 019	17	LH	
4	SWD 280	CRB-P 529	1 14 02 0173	2 418 390 211	22	LH	
5	TM 410	CBR-P 300	1 17 03 0005	D2/99D 32/89 D	30	LH	2996102
5	TM 410	CBR-P 301	1 17 03 0006	32/89 D	30	LH	NEW
6	SWD 280	CRB-P 202	1 17 02 0070	3 418 390 612	22	LH	COVER TIN

Scandic Diesel Services Inc.
 6360 Notre Dame East
 Montreal, Quebec
 H1N 2E1, Canada

Phone +1 514 228 1299
 Telefax +1 514 256 8237
 24 hours +1 514 566 1553
 Email sales@scandiserv.com

www.scandiserv.com

Scandic Diesel Services © 2009 - 2011
 All rights reserved



STORK WERKSPoor DIESEL S.W.D.

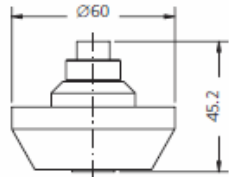


Fig.1

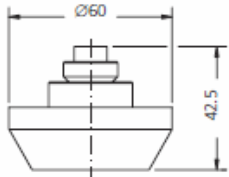
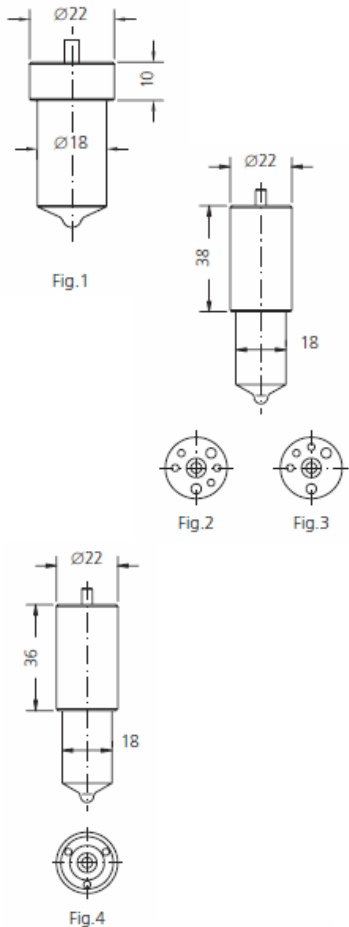


Fig.2

DELIVERY VALVES SUITABLE TO:				STORK WERKSPoor DIESEL S.W.D		
DRW.	ENGINE TYPE	SDS TYPE	SDS No.	ORIGINAL REFERENCE	TECHNICAL DATA	NOTES
					\emptyset	
1	ALSS	CBR-V 300	2 18 03 0100	SWD 1314102 32/117	16	FOR PUMP 32/99 D
2	ALSS	CBR-V 301	2 18 03 0101	32/93	16	FOR PUMP 32/89 D



STORK WERKSPoor DIESEL S.W.D.



* = RAFFREDDATO - COOLED
 C = CROMATO - CHROMATED

NOZZLE ELEMENTS SUITABLE TO:				STORK WERKSPoor DIESEL S.W.D			
DRW.	ENGINE TYPE	SDS TYPE	SDS No.	ORIGINAL REFERENCE	SPRAY DATA	PRESS. STAGE	NOTES
1	RUHB 215	L 0 T 135 A 369 P 9	3 04 03 0213	H 0 T 135 A 369 P 9	1x1.35	6x3.5	3736.094
1	FBHD 240 FCHD 240	L 145 T 1121	3 04 02 0737	DL 145 T 1121	9x0.30x145°	7x3.5	
1	F 240	L 145 T 1201	3 04 02 0823	DL 145 T 1201	9x0.325x145°	7x3.5	MOLIBDENO
1	F 240	L 145 T 1203	3 04 02 0825	DL 145 T 1203	9x0.325x145°	7x3.5	
1	FHD 240	L 145 T 1205	3 04 02 0827	DL 145 T 1205	9x0.35x145°	7x3.5	MOLIBDENO
*2	SW 280 SWD 280	LLF 150 T 12	3 30 02 0212	DLLF 150 T 12	9x0.495x150°	7x4.0	
*3	F 240	LLF 145 T 13	3 30 02 0213	DLLF 145 T 13	9x0.325x145°	7x3.5	
*2	SWD 280	LLF 150 T 18	3 30 02 0218	DLLF 150 T 18	9x0.495x150°	7x4.0	
4	TM 270	LL 132 T 35 H 200 P 4	3 06 03 0005	HL 132 T 35 H 200 P 4	8x0.35x132°	8x5.0	3736.082
4	TMAB 270	LL 132 T 37 H 200 P 5	3 06 03 0010	HL 132 T 37 H 200 P 5	8x0.37x132°	8x5.0	3736.087 380 rpm
4	TMAB 270	LL 132 T 40 H 200 P 4	3 06 03 0015	HL 132 T 40 H 200 P 4	8x0.40x132°	8x5.0	3736.083
4	TM 290	CSD-D 012	3 06 32 0007	3736.548	5x0.45x155°	8x5.0	
4		CSD-D 015	3 06 32 0010	3736.549	5x0.40x155°	8x5.0	

Scandic Diesel Services Inc.
 6360 Notre Dame East
 Montreal, Quebec
 H1N 2E1, Canada

Phone +1 514 228 1299
 Telefax +1 514 256 8237
 24 hours +1 514 566 1553
 Email sales@scandiserv.com

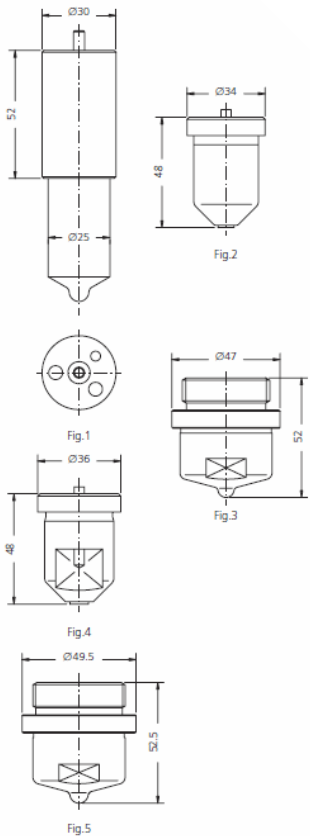
www.scandiserv.com

Scandic Diesel Services © 2009 - 2011
 All rights reserved



Scandic Diesel Services Inc.
"It's smooth sailing from here"

STORK WERKSPoor DIESEL S.W.D.



NOZZLE ELEMENTS SUITABLE TO:				STORK WERKSPoor DIESEL S.W.D			
DRW.	ENGINE TYPE	SDS TYPE	SDS No.	ORIGINAL REFERENCE	SPRAY DATA	PRESS. STAGE	NOTES
1 ^c	TM 330 TMAS 336	CSD-D 030	3 06 32 0050	3736.136	8x0.40x132°	8x4.0	
1 ^c		CSD-D 031	3 06 32 0051	LLA 132 U 4	8x0.35x132°	8x4.0	LLA 132 U 4
1 ^c		CSD-D 032	3 06 32 0052	3736.166	8x0.45x132°	8x4.0	
2	TMA-B 330, TMA 390 TMAB 390, TEB-H 450	CSD-D 050	3 16 32 0005	3736.301	1x2.5	8x5.5	
3	TMA 330	CSD-D 051	3 17 32 0005	3736.078	8x0.35x140°		
3	TMA-B 390, TEAH 450	CSD-D 052	3 17 32 0006	3736.079	8x0.50x140°		
3	TEB(SH) 450	CSD-D 059	3 17 32 0013	3736.421	8x0.55x132°		
3	TEB 450	CSD-D 060	3 17 32 0014	3736.427	8x0.50x140° 4x0.35x100°		
4	TM 410	CSD-D 078	3 16 32 0008	3736.334	1x3.2	8x5.5	
4	TM 410	CSD-D 080	3 16 32 0010	3736.336	1x4.0	8x5.7	
4	TM 410	CSD-D 081	3 16 32 0011	3736.337	1x4.0	8x5.5	
5	TM 410	CSD-D 085	3 17 32 0020	3736.431	10x0.57x150°		
5	TM 410	CSD-D 086	3 17 32 0021	3736.433	10x0.60x150°		

* = RAFFREDDATO - COOLED
 c = CROMATO - CHROMATED

Scandic Diesel Services Inc.
 6360 Notre Dame East
 Montreal, Quebec
 H1N 2E1, Canada

Phone +1 514 228 1299
 Telefax +1 514 256 8237
 24 hours +1 514 566 1553
 Email sales@scandiserv.com

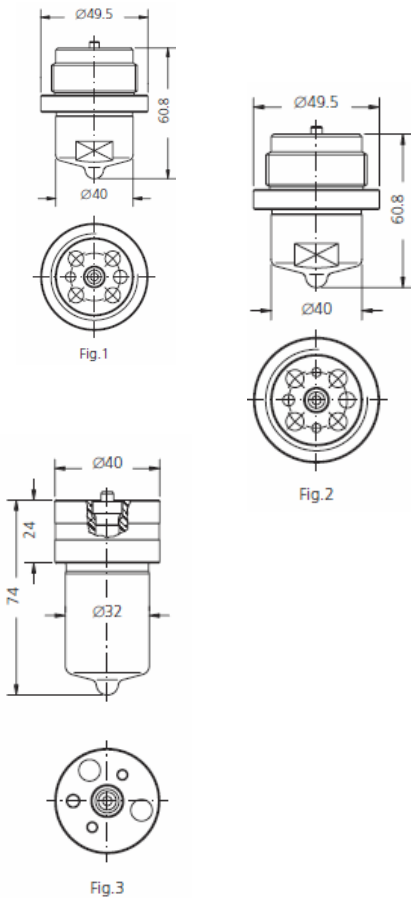
www.scandiserv.com

Scandic Diesel Services © 2009 - 2011
 All rights reserved



Scandic Diesel Services Inc.
"It's smooth sailing from here"

STORK WERKSPoor DIESEL S.W.D.



NOZZLE ELEMENTS SUITABLE TO: STORK WERKSPoor DIESEL S.W.D

DRW.	ENGINE TYPE	SDS TYPE	SDS No.	ORIGINAL REFERENCE	SPRAY DATA	PRESS. STAGE	NOTES
1	TM 410	CSD-D 090	3 22 32 0025	3736.5	10x0.60x153°	9x6.0	
*2	TM 410	CSD-D 094	3 37 32 0029	9545.794	10x0.55x153°	9x6.0	
*2	TM 410	CSD-D 095	3 37 32 0030	3736.446	10x0.63x153°	9x6.0	
*2	TM 410	CSD-D 096	3 37 32 0031	3736.439	10x0.57x153°	9x6.0	
*2	TM 410	CSD-D 097	3 37 32 0032	3736.481	10x0.60x153°	9x6.0	
*2	TM 410	CSD-D 098	3 37 32 0033	3736.488	10x0.60x140°	9x6.0	
*2	TM 410	CSD-D 100	3 37 32 0035	3736.496	10x0.63x143°	9x6.0	
*3	TM 410 D 2	CSD-D 111	3 36 32 0916	3736.445	10x0.63x153°	9x6.0	
*3	TM 410 D 2	CSD-D 113	3 36 32 0918	3736.449	10x0.60x153°	9x6.0	
*3	TM 410 D 2	CSD-D 119	3 36 32 0924	3736.491	10x0.60x140°	9x6.0	
*3	TM 410 D 2	CSD-D 120	3 36 32 0925	3736.497	10x0.63x140°	9x6.0	
*2	TM 410 D 2	CSD-D 150	3 37 32 0085	3736.5	10x0.60x150°	8x5.7	

* = RAFFREDDATO - COOLED
 † = CROMATO - CHROMATED

Scandic Diesel Services Inc.
 6360 Notre Dame East
 Montreal, Quebec
 H1N 2E1, Canada

Phone +1 514 228 1299
 Telefax +1 514 256 8237
 24 hours +1 514 566 1553
 Email sales@scandiserv.com

www.scandiserv.com

Scandic Diesel Services © 2009 - 2011
 All rights reserved