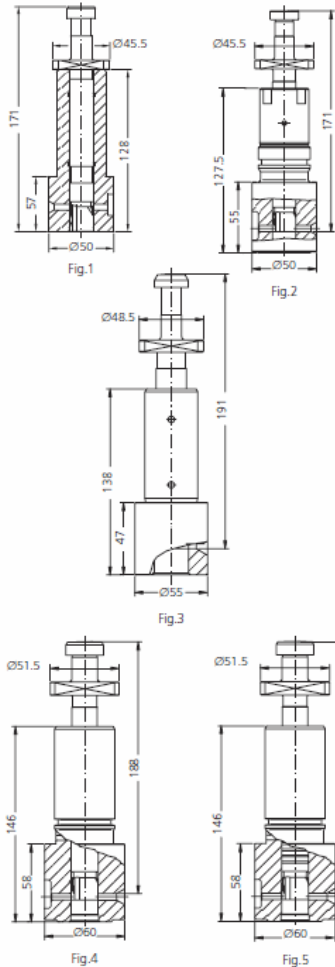




SULZER



PUMP ELEMENTS SUITABLE TO:					SULZER		
DRW.	ENGINE TYPE	SDS TYPE	SDS No.	ORIGINAL REFERENCE	TECHNICAL DATA		NOTES
					Ø	HELIX DIRECT.	
1	AL 20/24	CSR-P 040 OLD	1 26 28 0101	107.102.189 W7 2240 00 6207K	18	LH	
2	A-AL 20 H	CSR-P 043 NEW	1 26 28 0103	W7 2242 00 6207K	18	LH	
3	A-AS 25/30	CSR-P 045	1 26 28 0105	3.107.104.260.200	20	LH	DIESEL OIL
3	A-AS 25/30	CSR-P 046 H	1 26 28 0106	3.107.104.260.201	20	LH	HEAVY OIL
4	A-ATL 25/30	CSR-P 051 H	1 26 28 0110	3.107.104.316.200	20	LH	HEAVY OIL
5	AT 25	CSR-P 052 H	1 26 28 0111	7934	20	LH	HEAVY OIL

Scandic Diesel Services Inc.
 6360 Notre Dame East
 Montreal, Quebec
 H1N 2E1, Canada

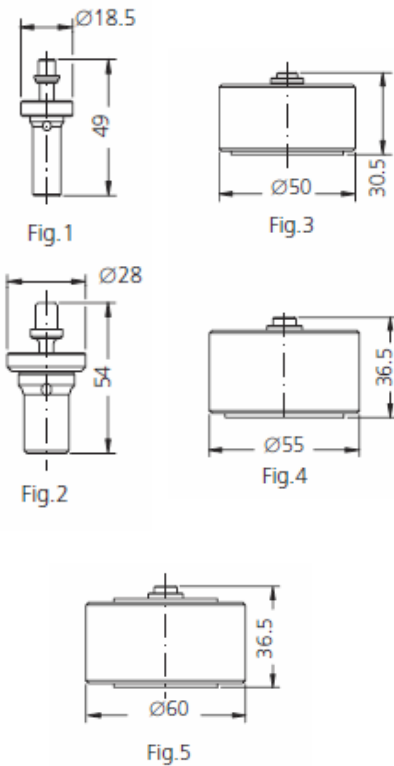
Phone +1 514 228 1299
 Telefax +1 514 256 8237
 24 hours +1 514 566 1553
 Email sales@scandiserv.com

www.scandiserv.com

Scandic Diesel Services © 2009 - 2011
 All rights reserved



SULZER



DELIVERY VALVES SUITABLE TO:					SULZER	
DRW.	ENGINE TYPE	SDS TYPE	SDS No.	ORIGINAL REFERENCE	TECHNICAL DATA	NOTES
					Ø	
1	BH 22	CSR-V 001	2 05 28 0005		5	
2	BH 22	CSR-V 005	2 06 28 0005		6	
4	A 20	CSR-V 011	2 10 28 0045		10	
3	A 20/24	CSR-V 010	2 10 28 0024	107.032.963	10	
3	A 20/24	CSR-V 030	2 10 28 0040		13	
4	A-AS 25/30	CSR-V 015	2 10 28 0025	107.030.790.200	10	
5	AT-ATL 25/30	CSR-V 020	2 10 28 0030	107.102.675.200	10	



Scandic Diesel Services Inc.
"It's smooth sailing from here"

SULZER

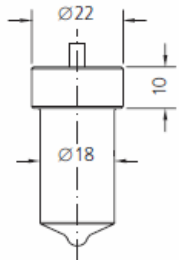


Fig.1

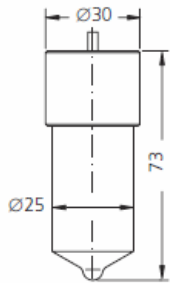


Fig.2

NOZZLE ELEMENTS SUITABLE TO:				SULZER			
DRW.	ENGINE TYPE	SDS TYPE	SDS No.	ORIGINAL REFERENCE	SPRAY DATA	PRESS. STAGE	NOTES
1	COCKERILL	L 130 T 30	3 04 02 0240	3.107.092.373.202	6x0.25x130°	6x3.0	0 433 300 093
1	DDA 22 T 24 ECHEVARRIA	L 130 T 204	3 04 02 0350	3.107.092.373.207	8x0.25x130°	6x3.0	0 433 300 101
1	T 24	L 130 T 465	3 04 02 0465	3.107.092.373.204	6x0.30x130°	6x3.0	0 433 300 106
2	TAD 56	CSR-D 015	3 06 28 0005	3.107.070.419.201	10x0.50x130°	12x6.0	
2	SAD 60 - SD 72	CSR-D 016	3 06 28 0006	3.107.070.419.205	10x0.525x130°	12x6.0	

Scandic Diesel Services Inc.
 6360 Notre Dame East
 Montreal, Quebec
 H1N 2E1, Canada

Phone +1 514 228 1299
 Telefax +1 514 256 8237
 24 hours +1 514 566 1553
 Email sales@scandiserv.com

www.scandiserv.com

Scandic Diesel Services © 2009 - 2011
 All rights reserved



SULZER

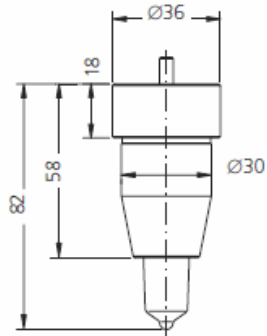


Fig.1

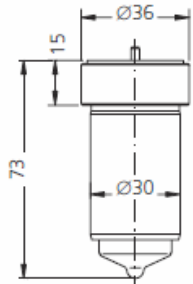


Fig.2



Fig.3

* = RAFFREDDATO - COOLED
 C = CROMATO - CHROMATED

Scandic Diesel Services Inc.
 6360 Notre Dame East
 Montreal, Quebec
 H1N 2E1, Canada

Phone +1 514 228 1299
 Telefax +1 514 256 8237
 24 hours +1 514 566 1553
 Email sales@scandiserv.com

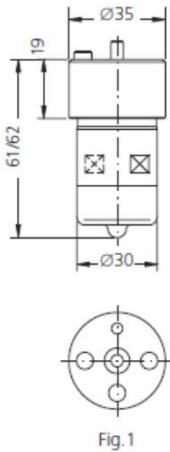
www.scandiserv.com

Scandic Diesel Services © 2009 - 2011
 All rights reserved

NOZZLE ELEMENTS SUITABLE TO:				SULZER			
DRW.	ENGINE TYPE	SDS TYPE	SDS No.	ORIGINAL REFERENCE	SPRAY DATA	PRESS. STAGE	NOTES
1	A 20/24	CSR-D 005	3 21 28 0005	2.107.102.522.201	7x0.26x159°	8x3.8	720÷750 rpm
1	A 20/24	CSR-D 006	3 21 28 0006	2.107.102.522.200	7x0.28x159°	8x3.8	900÷1000 rpm
1	A 20/24	CSR-D 007	3 21 28 0007	2.107.034.244.201	7x0.32x159°	8x3.8	
1	A 20/24	CSR-D 008	3 21 28 0008	2.107.102.522.205	9x0.25x159°	8x3.8	900÷1000 rpm
1	A 20/24	CSR-D 010	3 21 28 0010	2.107.102.522.204	9x0.23x159°	8x3.8	720÷750 rpm
1	A 20/24	CSR-D 014	3 21 28 0014		9x0.25x159°	7x3.8	
*2	S 20	CSR-D 009	3 35 28 0011	2.107.232.695.200	12x0.275x160°	6x4.0	1000 rpm
*2	S 20	CSR-D 030	3 35 28 0030	2.107.232.695.203	12x0.285x160°	6x4.0	
*2	S 20	CSR-D 031	3 35 28 0031	2.107.232.695.201	12x0.255x160°	6x4.0	900 rpm
*2	S 20	CSR-D 032	3 35 28 0032	2.107.232.695.202	12x0.24x160°	6x4.0	
3	S 20	CSR-D 021	3 21 28 0021	2.107.232.124.202	12x0.24x160°	6x4.0	



SULZER



NOZZLE ELEMENTS SUITABLE TO:					SULZER		
DRW.	ENGINE TYPE	SDS TYPE	SDS No.	ORIGINAL REFERENCE	SPRAY DATA	PRESS. STAGE	NOTES
*1	A 25/30	CSR-D 040	3 35 28 0001	2.107.104.696.202	9x0.285x150°	8x4.0	720÷750 rpm
*1	A 25/30	CSR-D 041	3 35 28 0002	2.107.101.391.200	9x0.30x150°	8x4.0	
*1	A 25/30	CSR-D 042	3 35 28 0003	2.107.034.537.200	9x0.325x150°	8x4.0	
*1	AS 25/30	CSR-D 043	3 35 28 0004	2.107.104.696.200	8x0.375x158°	8x4.0	900÷1000 rpm
*1	AS 25/30	CSR-D 044	3 35 28 0005	2.107.034.537.201	8x0.40x158°	8x4.0	
*1	AS 25/30	CSR-D 045	3 35 28 0006	2.107.104.692.201	9x0.32x158°	8x4.0	720÷750 rpm
*1	AS 25/30	CSR-D 046	3 35 28 0007	2.107.101.391.202	9x0.325x155°	8x4.0	
*1	AS 25/30	CSR-D 047	3 35 28 0008	2.107.034.537.202	9x0.35x155°	8x4.0	
*1	AT 25	CSR-D 048	3 35 28 0009	2.107.104.541.201	10x0.30x158°	8x5.0	720÷750 rpm
*1	AT 25	CSR-D 049	3 35 28 0010	2.107.104.541.200	10x0.35x158°	8x5.0	900÷1000 rpm

* = RAFFREDDATO - COOLED
 C = CROMATO - CHROMATED

Scandic Diesel Services Inc.
 6360 Notre Dame East
 Montreal, Quebec
 H1N 2E1, Canada

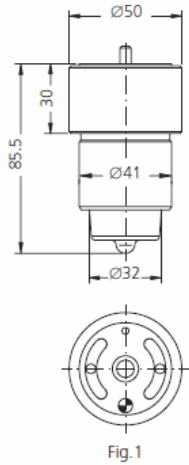
Phone +1 514 228 1299
 Telefax +1 514 256 8237
 24 hours +1 514 566 1553
 Email sales@scandiserv.com

www.scandiserv.com

Scandic Diesel Services © 2009 - 2011
 All rights reserved



SULZER



NOZZLE ELEMENTS SUITABLE TO:					SULZER		
DRW.	ENGINE TYPE	SDS TYPE	SDS No.	ORIGINAL REFERENCE	SPRAY DATA	PRESS. STAGE	NOTES
*1	Z 40/48	CSR-D 100	3 35 28 0018	2.107.110.718.200	8x0.525x160°	10x7.0	2 STROKE
*1	Z 40/48	CSR-D 101	3 35 28 0019	2.107.110.718.201	9x0.525x160°	10x7.0	500÷530 rpm
*1	Z 40/48	CSR-D 102	3 35 28 0020		9x0.55x160°	10x7.0	
*1	Z 40/48	CSR-D 103	3 35 28 0021		9x0.575x160°	10x7.0	
*1	Z 40/48	CSR-D 104	3 35 28 0022	2.107.110.718.202	12x0.475x160°	10x7.0	530 rpm
*1	Z 40/48	CSR-D 105	3 35 28 0023	2.107.110.718.203	12x0.50x160°	10x7.0	560 rpm
*1	Z 40/48	CSR-D 106	3 35 28 0024	2.107.110.718.204	12x0.525x160°	10x7.0	600 rpm
*1	Z 40/48	CSR-D 107	3 35 28 0025	2.107.110.718.205	12x0.55x160°	10x7.0	600 rpm
*1	Z 40/48	CSR-D 108	3 35 28 0026	10x0.525x160°	10x7.0		
*1	Z 40/48	CSR-D 109	3 35 28 0027	11x0.55x160°	10x7.0		

* = RAFFREDDATO - COOLED
 C = CROMATO - CHROMATED

Scandic Diesel Services Inc.
 6360 Notre Dame East
 Montreal, Quebec
 H1N 2E1, Canada

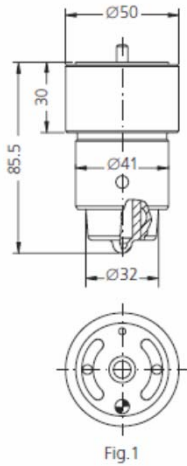
Phone +1 514 228 1299
 Telefax +1 514 256 8237
 24 hours +1 514 566 1553
 Email sales@scandiserv.com

www.scandiserv.com

Scandic Diesel Services © 2009 - 2011
 All rights reserved



SULZER



NOZZLE ELEMENTS SUITABLE TO:					SULZER		
DRW.	ENGINE TYPE	SDS TYPE	SDS No.	ORIGINAL REFERENCE	SPRAY DATA	PRESS. STAGE	NOTES
1	ZA 40 S	CSR-D 150	3 37 28 0010	10x0.625x144°	10x6.8		
1	ZA 40 S	CSR-D 152	3 37 28 0012	10x0.65x144°	10x6.8		
1	ZA 40 S	CSR-D 154	3 37 28 0014	10x0.675x144°	10x6.8		
1	ZA 40 S	CSR-D 156	3 37 28 0016	1.107.275.044.200	10x0.70x144°	10x6.8	500÷515 rpm
1	ZA 40 S	CSR-D 158	3 37 28 0018	1.107.275.044.201	12x0.65x144°	10x6.8	
1	ZA 40 S	CSR-D 160	3 37 28 0020	1.107.275.044.202	12x0.65x160°	10x6.8	
1	ZA 40 S	CSR-D 162	3 37 28 0022	13x0.60x160°	10x6.8		

Scandic Diesel Services Inc.
 6360 Notre Dame East
 Montreal, Quebec
 H1N 2E1, Canada

Phone +1 514 228 1299
 Telefax +1 514 256 8237
 24 hours +1 514 566 1553
 Email sales@scandiserv.com

www.scandiserv.com

Scandic Diesel Services © 2009 - 2011
 All rights reserved

