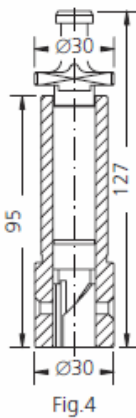
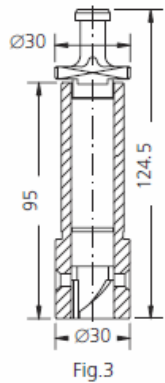
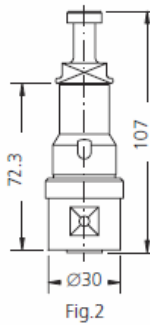
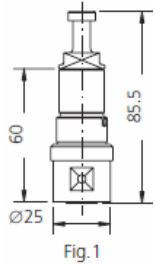




YANMAR



PUMP ELEMENTS SUITABLE TO:

YANMAR

DRW.	ENGINE TYPE	SDS TYPE	SDS No.	ORIGINAL REFERENCE	TECHNICAL DATA		NOTES
					Ø	HELIX DIRECT.	
1	6 RAL-HT 6 RL-HT	CYR-P 030	1 26 13 0005	2	14	LH	
1		CYR-P 031	1 26 13 0006	3	14	LH	
2	S 165 L	CYR-P 040	1 41 13 0100	5	16	RH	152693-51100
3		CYR-P 050	1 12 13 0015	5 F	17	RH	137603-51103
4		CYR-P 060	1 12 13 0010	4 L	16	RH	43883
4		CYR-P 065	1 12 13 0005		16	RH	137602-51151

Scandic Diesel Services Inc.
 6360 Notre Dame East
 Montreal, Quebec
 H1N 2E1, Canada

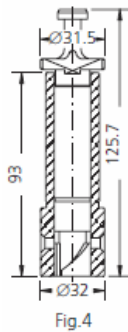
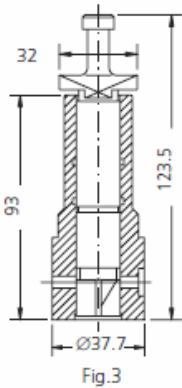
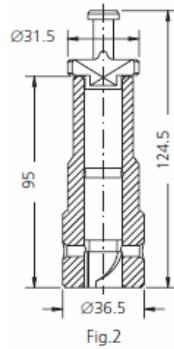
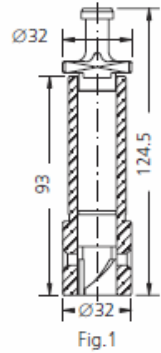
Phone +1 514 228 1299
 Telefax +1 514 256 8237
 24 hours +1 514 566 1553
 Email sales@scandiserv.com

www.scandiserv.com

Scandic Diesel Services © 2009 - 2011
 All rights reserved



YANMAR



PUMP ELEMENTS SUITABLE TO:

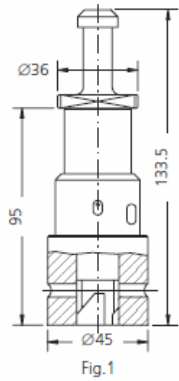
YANMAR

DRW.	ENGINE TYPE	SDS TYPE	SDS No.	ORIGINAL REFERENCE	TECHNICAL DATA		NOTES
					Ø	HELIX DIRECT.	
1		CYR-P 070	1 12 13 0020	137603-51104	17	RH	C 17
2	S 187	CYR-P 100	1 14 13 0005	146613-51100	17	RH	
2		CYR-P 102	1 14 13 0007	136670-51102	17	LH	
3	6 UAL-ST	CYR-P 110	1 14 13 0010	141170-1920	18	RH	C 47
4		CYR-P 200	1 12 13 0050	137600-51105	15	RH	9 B



Scandic Diesel Services Inc.
"It's smooth sailing from here"

YANMAR



PUMP ELEMENTS SUITABLE TO:

YANMAR

DRW.	ENGINE TYPE	SDS TYPE	SDS No.	ORIGINAL REFERENCE	TECHNICAL DATA		NOTES
					Ø	HELIX DIRECT.	
1	M 200 L	CYR-P 300	1 26 13 0105	141646-51104	19	RH	
1	M 200 L	CYR-P 305	1 26 13 0110	147644-51103	20	RH	

Scandic Diesel Services Inc.
 6360 Notre Dame East
 Montreal, Quebec
 H1N 2E1, Canada

Phone +1 514 228 1299
 Telefax +1 514 256 8237
 24 hours +1 514 566 1553
 Email sales@scandiserv.com

www.scandiserv.com

Scandic Diesel Services © 2009 - 2011
 All rights reserved



YANMAR

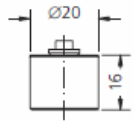


Fig.1

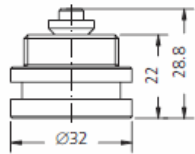


Fig.2

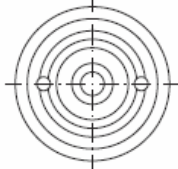
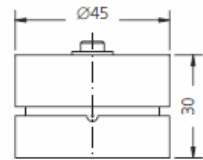


Fig.3

DELIVERY VALVES SUITABLE TO:				YANMAR		
DRW.	ENGINE TYPE	SDS TYPE	SDS No.	ORIGINAL REFERENCE	TECHNICAL DATA	NOTES
					Ø	
1	6 KLT-3 B	CYR-V 001	2 06 13 0001		6	
2	6 MAL-HTS	CYR-V 050	2 08 13 0050		8	
3	T 260 L-ST	CYR-V 100	2 12 13 0100		12	



YANMAR

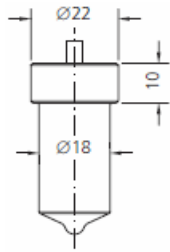


Fig.1

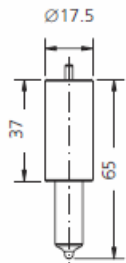


Fig.2

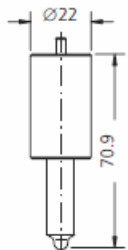


Fig.3

NOZZLE ELEMENTS SUITABLE TO:				YANMAR			
DRW.	ENGINE TYPE	SDS TYPE	SDS No.	ORIGINAL REFERENCE	SPRAY DATA	PRESS. STAGE	NOTES
1	6 U-ST	L 150 T 258 D	3 04 13 0003	YDL 150 T 258 D	8x0.25x150°	6x3.3	137600-53000
1	6 U-AL 185 UT-M 200	L 150 T 308 S (S 3)	3 04 13 0050	YDL 150 T 308 S (S 3)	8x0.30x150°	6x3.5	
1		L 150 T 308 S 6	3 04 13 0005	YDL 150 T 308 S 6	8x0.30x150°	6x3.3	
1	T 220 H	L 150 T 328 S OLP 2	3 04 13 0008	YDL 150 T 328 S OLP 2	8x0.32x150°	6x3.3	
1	ZPH S 165, S 165 L	L 150 T 366 D 1	3 04 13 0010	YDL 150 T 366 D 1	6x0.36x150°	6x3.3	140677-53001
1		L 150 T 386 D 1	3 04 13 0020	YDL 150 T 386 D 1	8x0.38x150°	6x3.5	
1		L 150 T 388 S	3 04 13 0060	YDL 150 T 388 S	8x0.38x150°	6x3.5	
1		L 150 T 408 S	3 04 13 0051	YDL 150 T 408 S	8x0.40x150°	6x3.4	
1		L 155 T 348 D	3 04 13 0009	YDL 150 T 348 D	8x0.34x155°	6x3.3	
2		CYR-D 005	3 03 13 0005	N 16	4x0.30x100°	6x4.0	103200-53000
2		CYR-D 006	3 03 13 0006	N 28	5x0.32x80°	6x4.0	
3	71	LL 150 TA 288 N 4	3 06 14 0003	NPDLL 150 TA 288 N 4	8x0.28x150°	6x3.0	
3	71	LL 150 TA 288 N 6	3 06 14 0005	NPDLL 150 TA 288 N 6	8x0.28x150°	6x4.0	137677-53500

Scandic Diesel Services Inc.
 6360 Notre Dame East
 Montreal, Quebec
 H1N 2E1, Canada

Phone +1 514 228 1299
 Telefax +1 514 256 8237
 24 hours +1 514 566 1553
 Email sales@scandiserv.com

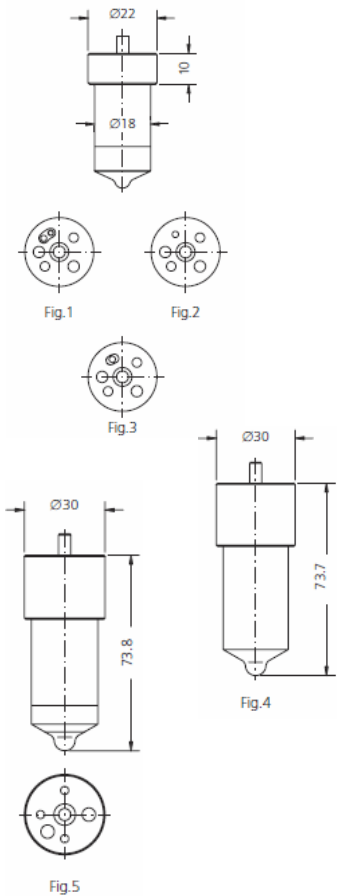
www.scandiserv.com

Scandic Diesel Services © 2009 - 2011
 All rights reserved



Scandic Diesel Services Inc.
"It's smooth sailing from here"

YANMAR



* = RAFFREDDATO - COOLED
 C = CROMATO - CHROMATED

NOZZLE ELEMENTS SUITABLE TO:

YANMAR

DRW.	ENGINE TYPE	SDS TYPE	SDS No.	ORIGINAL REFERENCE	SPRAY DATA	PRESS. STAGE	NOTES
*1	MAL-T	LF 150 T 288-DVH	3 31 13 0025	YDLF 150 T 288-DVH	8x0.28x150°	6x3.0	COOLED
*2		LF 150 T 308-DV	3 31 13 0030	YDLF 150 T 308-DV	8x0.30x150°	6x3.2	COOLED
*2	MAL-T	LF 150 T 328-DV	3 31 13 0040	YDLF 150 T 328-DV	8x0.32x150°	6x3.2	COOLED
*2	MAL-T	LF 140 T 358-DVA	3 31 13 0043	NPDFL 140 T 358-DVA	8x0.35x140°	6x3.6	COOLED
*2		LF 150 T 358-DV	3 31 13 0045	YDLF 150 T 358-DV	8x0.35x150°	6x3.2	141616-53110 COOLED
*1c	6 UL-UT	LF 150 TB 288 N 13	3 31 14 0015	NPDFL 150 TB 288 N 13	8x0.28x150°	6x3.2	COOLED
*3	M 200 L-U, MAL-HT	LF 150 TB 288 N 23	3 31 14 0017	NPDFL 150 TB 288 N 23	8x0.28x150°	6x3.2	COOLED 137603-53010
*2	MAL-UT-M 200 L	LF 150 TB 288 N 29	3 31 14 0019	NPDFL 150 TB 288 N 29	8x0.28x150°	6x3.2	COOLED 137603-53001
*2	6 M-AL, 6 M-HT, 6 ML-HT M 200 L-ST	LF 150 TB 288 N 30	3 31 14 0020	NPDFL 150 TB 288 N 30	8x0.28x150°	6x3.2	COOLED 137603-53011
*2	6 G-HT, 6 G-HTM, 6 UAL-UT, M 200 L-U, ST	LF 150 TB 308 N 23	3 31 14 0022	NPDFL 150 TB 308 N 23	8x0.30x150°	6x4.0	COOLED 139653-53050
*2	6 MAL, 6 MHT, 6 ML-HT, M 200 L-I, ST	LF 150 TB 308 N 30	3 31 14 0023	NPDFL 150 TB 308 N 30	8x0.30x150°	6x3.2	COOLED
*2	S 185-UT, GL-UT	LF 150 TB 328 N 23	3 31 14 0014	NPDFL 150 TB 328 N 23	8x0.32x150°	6x3.6	COOLED 139653-53060
*1	GAL-UT/GL-DT	LF 150 TB 348 N 17	3 31 14 0025	NPDFL 150 TB 348 N 17	8x0.34x150°	6x3.8	COOLED
4	Z 280/AII ZL	L 150 U 408 NP 9	3 05 14 0005	NPDFL 150 U 408 NP 9	8x0.40x150°	8x5.0	
*5	6 ZL-6 ST ZL/AII ZL-UT	LF 150 UB 408 N 11	3 33 14 0013	NPDFL 150 UB 408 N 11	8x0.40x150°	8x4.0	142622-53060 COOLED

Scandic Diesel Services Inc.
 6360 Notre Dame East
 Montreal, Quebec
 H1N 2E1, Canada

Phone +1 514 228 1299
 Telefax +1 514 256 8237
 24 hours +1 514 566 1553
 Email sales@scandiserv.com

www.scandiserv.com

Scandic Diesel Services © 2009 - 2011
 All rights reserved